

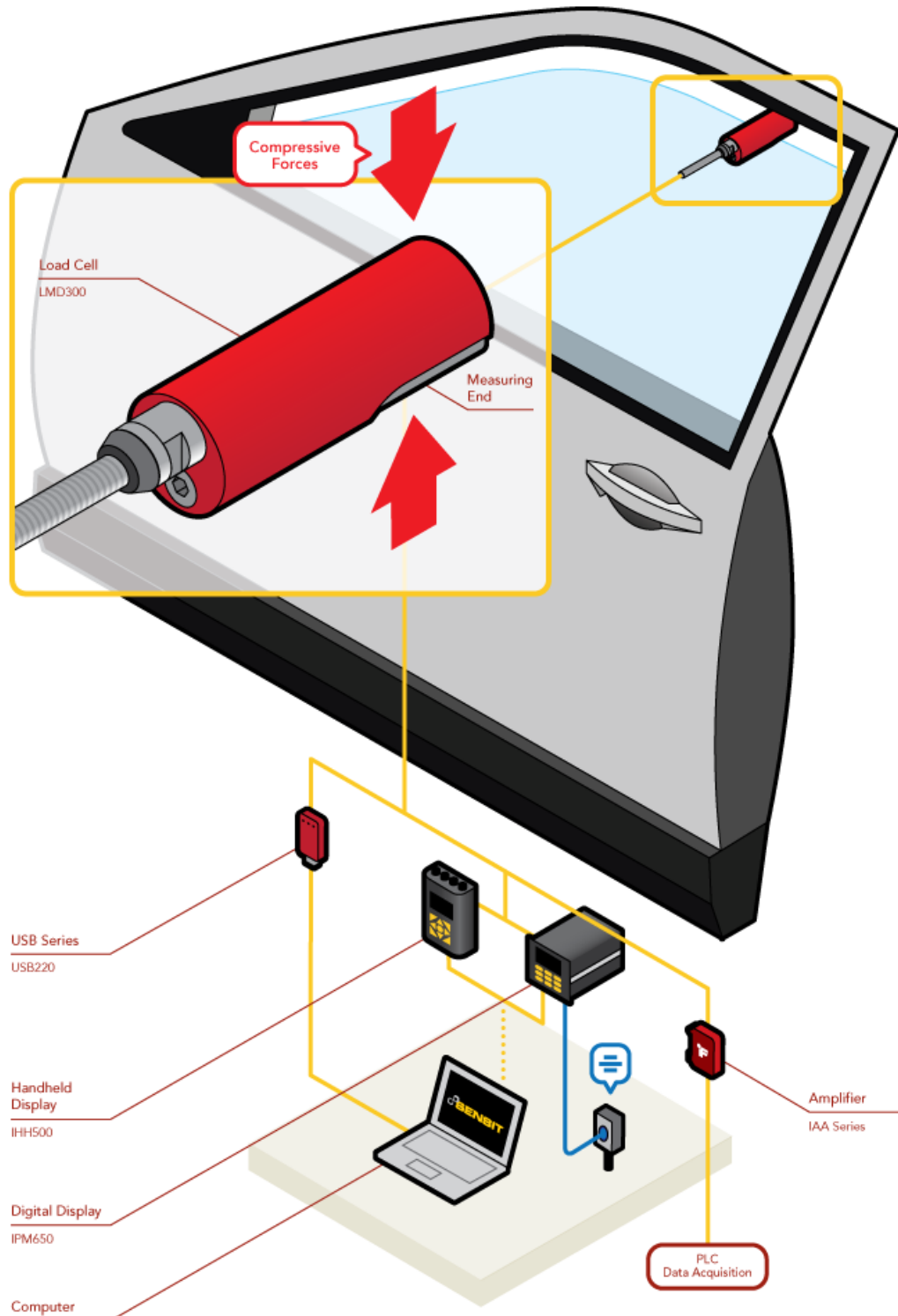


### 应用概述

FUTEK 的手持式夹力传感器，可以协助汽车制造商更好地进行车窗的夹紧力测试，达到联邦机动车的标准要求。

### 使用产品

夹力传感器（LMD300）配置后续模块（IAA 放大器模块，IPM650/IHH500 显示仪表，或者 USB 采集方案。



### 测力传感器

#### Sensor Solution Source

Load · Torque · Pressure · Multi Axis · Calibration · Instruments · Software

www.omgl.com.cn | sales@omgl.com.cn





## 使用说明

1. Automakers use pinch force sensors to measure and record the closing force of a power window or sunroof.
2. The LMD300 is a hand held unit placed between a power window and door frame. The load cell is then pinched and quantifies precise closing force measurement.
3. These force measures can be streamed to a PC utilizing FUTEK's USB Solutions.
4. Once streamed to a PC, that data can then be monitored by FUTEK's SENSIT™ Test and Measurement Software. SENSIT™ can monitor up to 16 channels of measurement readings, as well as live graph and data log.



**LMD300**  
夹力传感器

**USB 方案**  
数据采集模块

**IAA 系列**  
应变式放大器

**IHH500**  
便携式显示仪表

**IPM650**  
面板式显示仪表

**软件**  
SENSIT™ Test and  
Measuremen