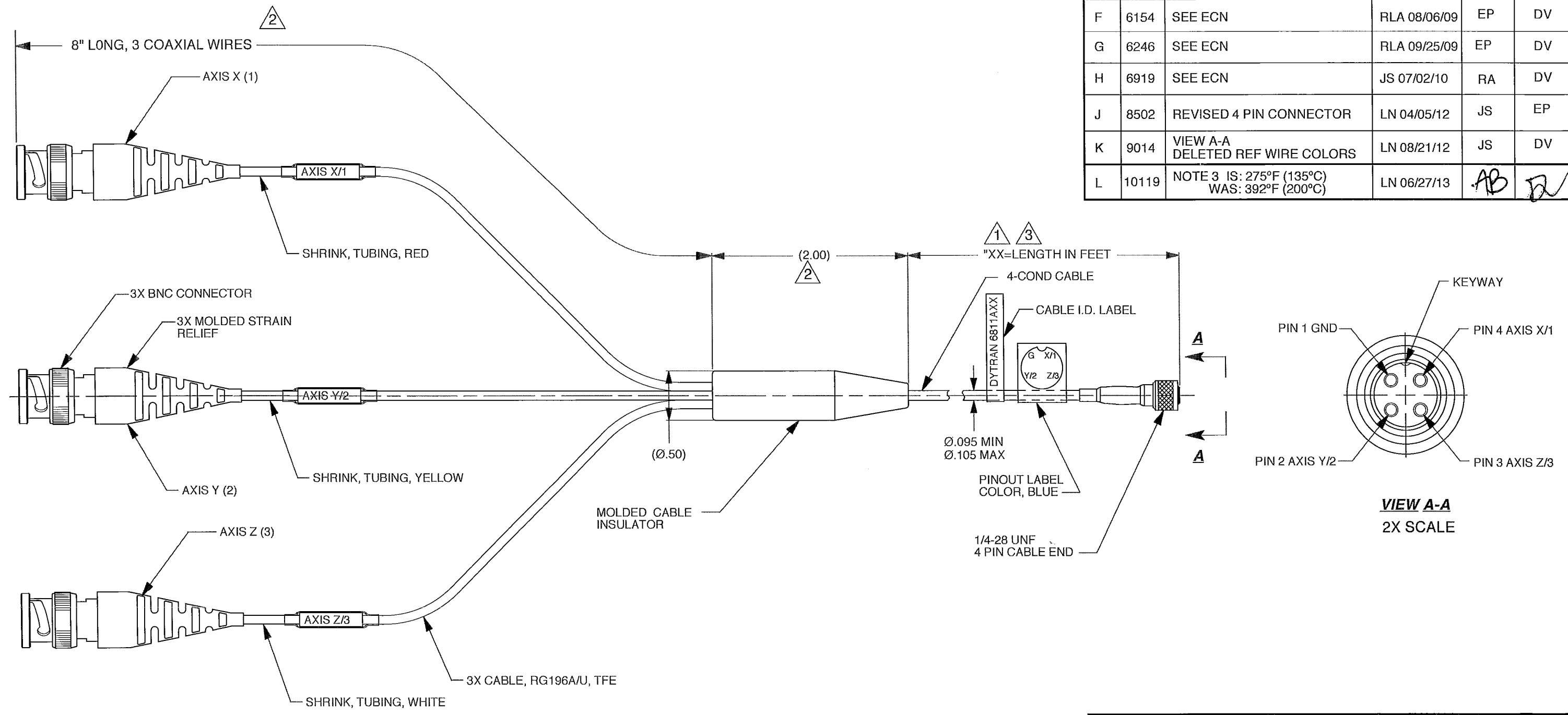


REV	ECN	DESCRIPTION	BY/DATE	CHK	APPR
C	5304	EXTENSIVELY REVISED	RLA 8/28/08	DV	ANS
D	5817	ADDED STRAIN RELIEF	RLA 03/05/09	EP	ANS
E	5905	ADDED NOTE 2	RLA 04/01/09	EP	ANS
F	6154	SEE ECN	RLA 08/06/09	EP	DV
G	6246	SEE ECN	RLA 09/25/09	EP	DV
H	6919	SEE ECN	JS 07/02/10	RA	DV
J	8502	REVISED 4 PIN CONNECTOR	LN 04/05/12	JS	EP
K	9014	VIEW A-A DELETED REF WIRE COLORS	LN 08/21/12	JS	DV
L	10119	NOTE 3 IS: 275°F (135°C) WAS: 392°F (200°C)	LN 06/27/13	AB	DL



- ③ OPERATING RANGE: -67°F (-55°C) TO 275°F (135°C)
- ② OPERATING RANGE: -67°F (-55°C) TO 230°F (110°C)
- ① XX=WILL VARY IN FEET PER CUSTOMER REQUIREMENTS, FOR EXAMPLE: 6811A07 = 7 FT CABLE LENGTH

EXCEPT AS OTHERWISE NOTED

ALL DIMENSIONS IN INCHES
TOLERANCE: .XXX = ± .XX = ± .25

SURFACE FINISH
EXCEPT AS NOTED ✓

BREAK EDGES TO DEBURR
RADIUS OR CHAMFER

△ THESE DIAS ⊙ TO T.I.R.

FILLETS - MAX RAD.

		MASTER ONLY IF IN RED		CHATSWORTH, CA.	
SCALE	1X	REV	-	DATE	SEE REV BLK
DATE	5/21/02	PART NO.	MODEL 6811AXX		
DRAWN	R.A.	CHECKED	N.C.	MAT'L	-
APPROVED	CES	12/20/06	NEXT ASSEMBLY	-	USED ON
TITLE OUTLINE/INSTALLATION DRAWING, CABLE ASSEMBLY, MINI 4 PIN, PLUG TO (3) BNC					DWG NO. 127-6811A
					SHEET 1 OF 1