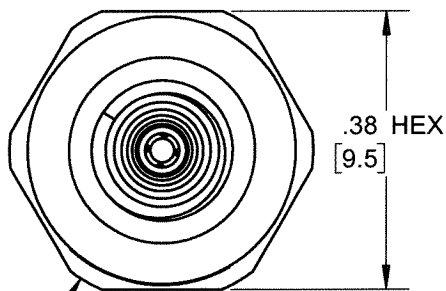


PROPRIETARY AND CONFIDENTIAL

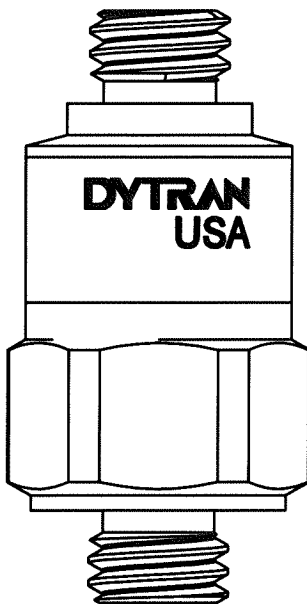
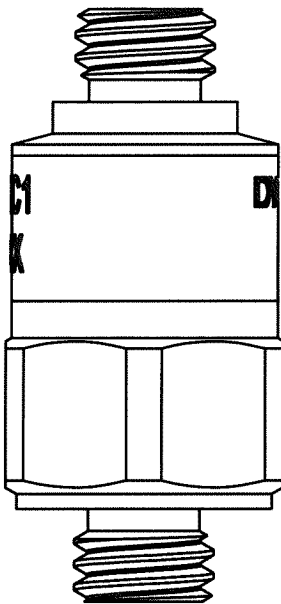
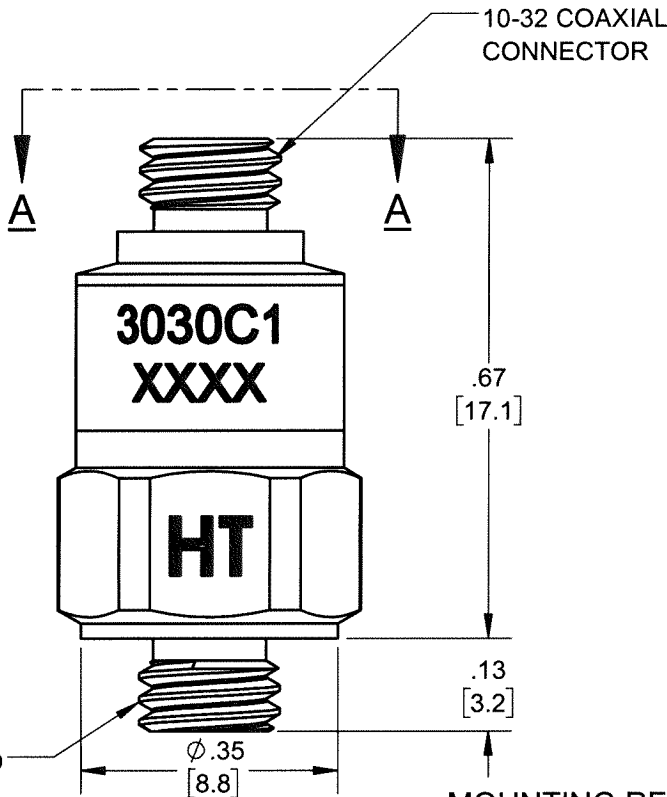
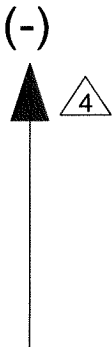
THE INFORMATION CONTAINED IN THIS DRAWING IS THE SOLE PROPERTY OF DYTRAN INSTRUMENTS INC. ANY REPRODUCTION IN PART OR AS A WHOLE WITHOUT THE WRITTEN PERMISSION OF DYTRAN INSTRUMENTS INC. IS PROHIBITED

REVISIONS

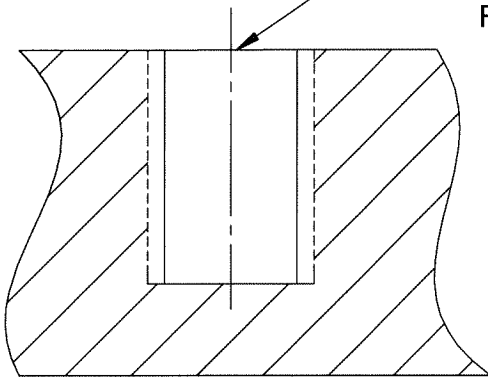
REV	ECN	DESCRIPTION	BY/DATE	CHK	APPR
B	12932	REDRAWN IN SOLIDWORKS	RA, 09/09/16	EM	LN
C	14138	SEE ECN	MH, 04/04/18	EM	EM



VIEW A-A
SCALE 4 : 1



MOUNTING RECOMENDATIONS: PREPARE FLAT MOUNTING SURFACE $\phi .50$ [12.7] MIN, FLAT TO .001 TIR. DRILL AND TAP 10-32 UNF-2B $\nabla .15$ [3.8] MIN. RECOMMENDED MOUNTING TORQUE: 15 LB IN +0/-5 LB IN



- 4 ARROW INDICATES SENSE AND DIRECTION OF ACCELERATION FOR NEGATIVE - GOING OUTPUT SIGNAL
- 3 PREPARE FLAT SURFACE TO THIS DIA. WITH A FINISH OF $\sqrt{63}$ OR BETTER AND FLAT TO .001 TIR.
- 2 PREPARE MOUNTING SURFACE AS SHOWN. APPLY A LAYER OF SILICONE GREASE TO MOUNTING SURFACE. TORQUE IN PLACE WITH 15 LB-IN.

1. HOUSING MATERIAL: 316L STAINLESS STEEL

NOTES: UNLESS OTHERWISE SPECIFIED

UNLESS OTHERWISE SPECIFIED:
INTERPRET DIM & TOL PER
ASME Y14.5M - 1994.
REMOVE BURRS.
COUNTERSINK INTERNAL THDS
90° TO MAJOR DIA.
CHAM EXT THDS 45° TO MINOR DIA.
THD LENGTHS AND DEPTHS ARE FOR
MIN FULL THDS.
DIMENSIONS APPLY AFTER FINISHING.


ALL MACHINED SURFACES.
TOTAL RUNOUT WITHIN .005.
BREAK SHARP EDGES .005 TO .010.
MACHINED FILLET RADII .005 TO .015.
WELDING SYMBOLS PER AWS A2.4.
ABBREVIATIONS PER MIL-STD-12.

UNLESS OTHERWISE SPECIFIED: DIMENSIONS ARE IN INCHES. DIMENSIONS IN BRACKETS [] ARE IN MILLIMETERS TOLERANCES ARE:		
DECIMALS .XX ± .03 .XXX ± .010	METRIC X ± 0.8 .XX ± 0.25	ANGLES ± 1°
APPROVALS		DATE
ORIG	NC	11/16/98
CHK	RA	08/26/03
APP	NC	08/26/03
DO NOT SCALE DRAWING		THIRD ANGLE PROJECTION USA



TITLE: **OUTLINE/INSTALLATION
DRAWING, MODEL 3030C1**

SIZE B	CAGE CODE 2W033	DWG NO 127-3030C1	REV C
SCALE: 2:1		SHEET 1 OF 1	

MODEL NUMBER 3030C1		PERFORMANCE SPECIFICATION				DOC NO. PS3030C1	
		Accelerometer, Charge Mode				REV D, ECN 14401, 08/09/18	
<div></div>		<div><ul style="list-style-type: none">• HERMETICALLY SEALED• ROBUST DESIGN• LIGHTWEIGHT</div>					
PHYSICAL		ENGLISH		SI			
Weight		0.24	oz	7.2	grams		
Connector [1]	Type	10-32		10-32			
	Material	300 Series S.S.		300 Series S.S.			
Housing	Material	17-4 PH		17-4 PH			
Mounting Provision	Stud	10-32 UNF-2A		10-32 UNF-2A			
Sensing Element	Material	Ceramic		Ceramic			
	Mode	Compression		Compression			
PERFORMANCE							
Sensitivity, +30%/-10% [2]		0.40	pC/g	0.04	pC/m/s^2		
Acceleration Range		[3]	Gpeak	[3]	m/s^2 peak		
Frequency Range		[5] to 5000	Hz	[5] to 5000	Hz		
Resonance Frequency		30	kHz	30	kHz		
Linearity [4]		±1	%	±1	%		
Transverse Sensitivity Max		5	%	5	%		
ENVIRONMENTAL							
Shock Max		3000	g pk	29430	m/s^2		
Vibration Max		1000	g pk	9810	m/s^2		
Operating Temperature		-148 to +450	°F	-100 to +232	°C		
Seal		Hermetic		Hermetic			
ELECTRICAL							
Capacitance, nom		126	pF	126	pF		

This family also includes:

Model	Sensitivity (pC/g)	Range (Gpeak)	Resolution (Grms)	Oper. Temp(°F)

Please, refer to the performance specifications of the products in this family for detailed description

Supplied Accessories:

1) Accredited Calibration Certificate (ISO 17025)

Notes:

[1] Mates with Dytran cable Model 6013AXX or 6019AXX (XX= Length in feet).

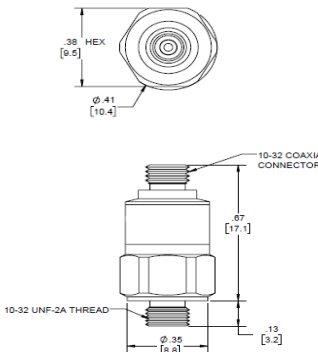
[2] Measured At 100 Hz, 1 Grms per ISA RP37.2.

[3] Depends on the gain setting of the charge amplifier used

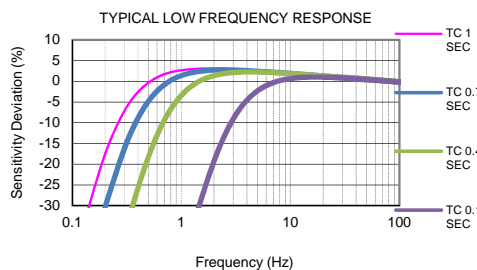
[4] Measured using zero-based best straight line method, % of F.S. or any lesser calibrated range.

[5] Low frequency response is dependent upon the discharge time constant of the charge amplifier.


Please, refer to plot below for frequency response for different time constants.



TYPICAL LOW FREQUENCY RESPONSE



Units on the line drawing are in inches, units in brackets are in millimeters. Refer to 127-3030C1 for more



21592 Marilla Street, Chatsworth, California 91311 Phone: 818.700.7818 Fax:818.700.7880 www.dytran.com For permission to reprint this content, please contact info@dytran.com



21592 Marilla Street, Chatsworth, California 91311 Phone: 818.700.7818 Fax:818.700.7880 www.dytran.com For permission to reprint this content, please contact info@dytran.com