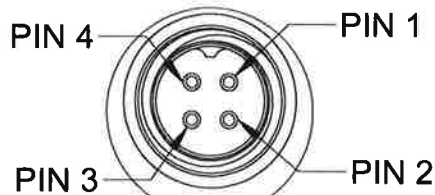


PROPRIETARY AND CONFIDENTIAL

THE INFORMATION CONTAINED IN THIS DRAWING IS THE SOLE PROPERTY OF DYTRAN INSTRUMENTS INC. ANY REPRODUCTION IN PART OR AS A WHOLE WITHOUT THE WRITTEN PERMISSION OF DYTRAN INSTRUMENTS, INC. IS PROHIBITED

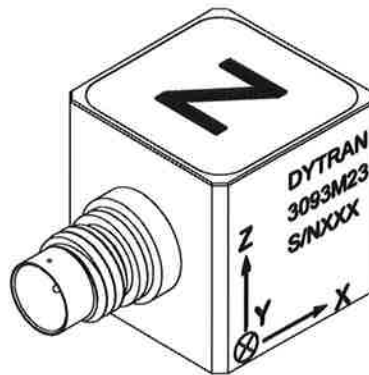
REVISIONS

REV.	ECN	DESCRIPTION	BY/DATE	CHK	APPR
C	12594	ADDED NOTE 6	JS 03/31/16	LA	AS



DETAIL A

CONNECTOR PINOUT
PIN 1 GND RETURN, COMMON
PIN 2 SIG/PWR AXIS 2 (Y)
PIN 3 SIG/PWR AXIS 3 (Z)
PIN 4 SIG/PWR AXIS 1 (X)



6. MINOR VOIDS, SCARS, SCRATCHES AND MOUNTING BLEMISH/WITNESS MARKS ON EXTERIOR SURFACES ARE ALLOWED DUE TO RESTRAINING AND HANDLING DURING TESTING, TRANSPORT OR PROCESSING. THESE APPEAR AS INDICATORS THAT DO NOT AFFECT FORM, FIT OR FUNCTION AS INTENDED BY DESIGN OR APPLICATION

5 MATES WITH DYTRAN CABLE 6811AXX (XX=LENGTH IN FEET)

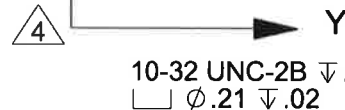
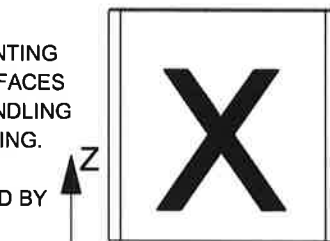
4 ARROWS INDICATE ACCELERATION DIRECTION FOR POSITIVE OUTPUT.

3. HOUSING AND CONNECTOR MATERIAL: TITANIUM

2. WEIGHT: 15 GRAMS MAX.

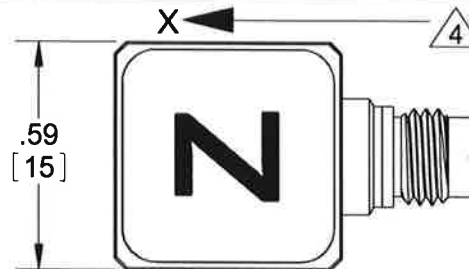
1. ENVIRONMENTAL SEAL: HERMETIC

NOTES: UNLESS OTHERWISE SPECIFIED

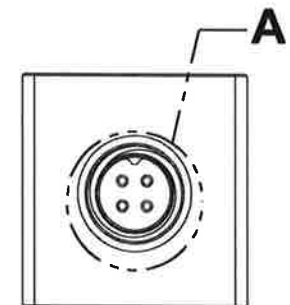
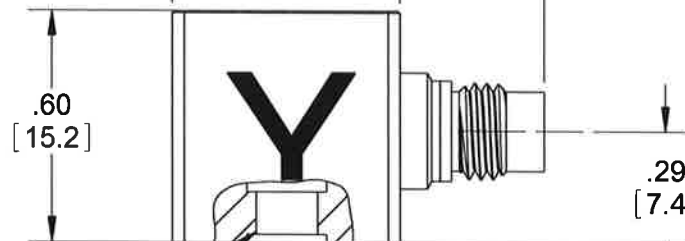
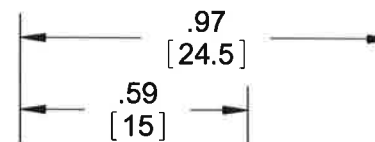


10-32 UNC-2B \downarrow .16
 \square ϕ .21 \downarrow .02

MODEL 6200
MTG STUD
(SUPPLIED)



4 PIN CONNECTOR
1/4-28 UNF-2A



MOUNTING SURFACE PREPARATION: SELECT SURFACE FLAT TO .001 TIR
TAP 10-32 UNF-2B X .200 MIN THD DEPTH. RECOMMENDED TORQUE 10-12 LB-IN.

USED ON	NEXT ASSY
APPLICATION	
THIRD ANGLE PROJECTION USA	

UNLESS OTHERWISE SPECIFIED:
INTERPRET DIM & TOL PER ASME Y14.5M - 1994.
REMOVE BURRS.
COUNTERSINK INTERNAL THDS 90° TO MAJOR DIA.
CHAM EXT THDS 45° TO MINOR DIA.
THD LENGTHS AND DEPTHS ARE FOR MIN FULL THDS.
THDS PER MIL-S-7742.
DIMENSIONS APPLY AFTER FINISHING.
ALL MACHINED SURFACES.
TOTAL RUNOUT WITHIN .005.
BREAK SHARP EDGES .005 TO .010.
MACHINED FILLET RADII .005 TO .015.
WELDING SYMBOLS PER AWS A2.4.
ABBREVIATIONS PER MIL-STD-12.

UNLESS OTHERWISE SPECIFIED:
DIMENSIONS ARE IN INCHES.
DIMENSIONS IN BRACKETS [] ARE IN MILLIMETERS
TOLERANCES ARE:
INCHES METRIC ANGLES
.XX \pm .03 .X \pm 0.8 \pm 1°
.XXX \pm .010 .XX \pm 0.25

MATERIAL

FINISH

DO NOT SCALE DRAWING

CONTRACT NO.




TITLE:

OUTLINE/INSTALLATION DRAWING
3093M23

SIZE	CAGE CODE	DWG. NO.	REV
A	2W033	127-3093M23	C
SCALE: 2:1	SOLIDWORKS	SHEET 1 OF 1	

APPROVALS	DATE
ORIG RT 08/16/11	
CHK DV 08/27/11	
APP RT 08/30/11	
APP	

3093M23		PERFORMANCE SPECIFICATION				DOC NO PS3093M23	
		Accelerometer, Triaxial, IEPE				REV F, ECN 15062, 05/21/2019	
<div></div>		<div><div>• TWO POLE ELECTRICAL FILTERED</div><div>• GROUND ISOLATED</div><div>• HERMETICALLY SEALED</div><div>• STUD MOUNT</div></div>					
		ENGLISH		SI			
PHYSICAL							
Weight, Max		0.5 oz		15 grams			
Mounting		10-32 Stud Mount		10-32 Stud Mount			
Connector [1]		4-pin		4-pin			
Type		Ti-6 AL-4V		Ti-6 AL-4V			
Material		Ti-6 AL-4V		Ti-6 AL-4V			
Housing		Case Isolated		Case Isolated			
Material		Piezoelectric		Piezoelectric			
Sensing Element		Shear		Shear			
Element							
PERFORMANCE							
Sensitivity, ±5% [2]		5 mV/g		0.51 mV/m/s^2			
Acceleration Range, ±		1000 Gpeak		9810 m/s^2 peak			
Frequency Range, ±5%		3.3-1000 Hz		3.3-1000 Hz			
Frequency Range, ±15%		2.2-3000 Hz		2.2-3000 Hz			
Frequency Range, ±3dB		1.1-6000 Hz		1.1-6000 Hz			
Resonance Frequency		>50 kHz		>50 kHz			
Linearity [3]		1 %F.S.		1 %F.S.			
Transverse Sensitivity, Max		6 %		6 %			
Noise floor		0.007 Grms		0.069 m/s^2 rms			
Spectral Noise		1000 μGrms/sqr(Hz)		9810 μm/s^2 rms/sqr(Hz)			
10Hz		500 μGrms/sqr(Hz)		4905 μm/s^2 rms/sqr(Hz)			
100Hz		100 μGrms/sqr(Hz)		981 μm/s^2 rms/sqr(Hz)			
1000Hz		60 μGrms/sqr(Hz)		589 μm/s^2 rms/sqr(Hz)			
10000Hz		50 μGrms/sqr(Hz)		491 μm/s^2 rms/sqr(Hz)			
ELECTRICAL							
Supply Current Range [4]		2 to 20 mA		2 to 20 mA			
Compliance Voltage Range		+18 to +30 VDC		+18 to +30 VDC			
Output Impedance, Typ.		100 Ω		100 Ω			
Output Bias Voltage		+7 to +13 VDC		+7 to +13 VDC			
Discharge Time Constant		0.15 to 0.5 Sec		0.15 to 0.5 Sec			
Filter (2 Pole, Butterworth)		6 kHz		6 kHz			
Electical Isolation, Min.		10 GΩ		10 GΩ			
ENVIRONMENTAL							
Shock Max		5000 g pk		49050 m/s^2			
Vibration Max		1500 g pk		14715 m/s^2			
Operating Temperature		-60 to +250 °F		-51 to +121 °C			
Seal		Hermetic		Hermetic			
Base Strain Sensitivity		0.002 g/μϵ		0.02 m/s^2/μϵ			