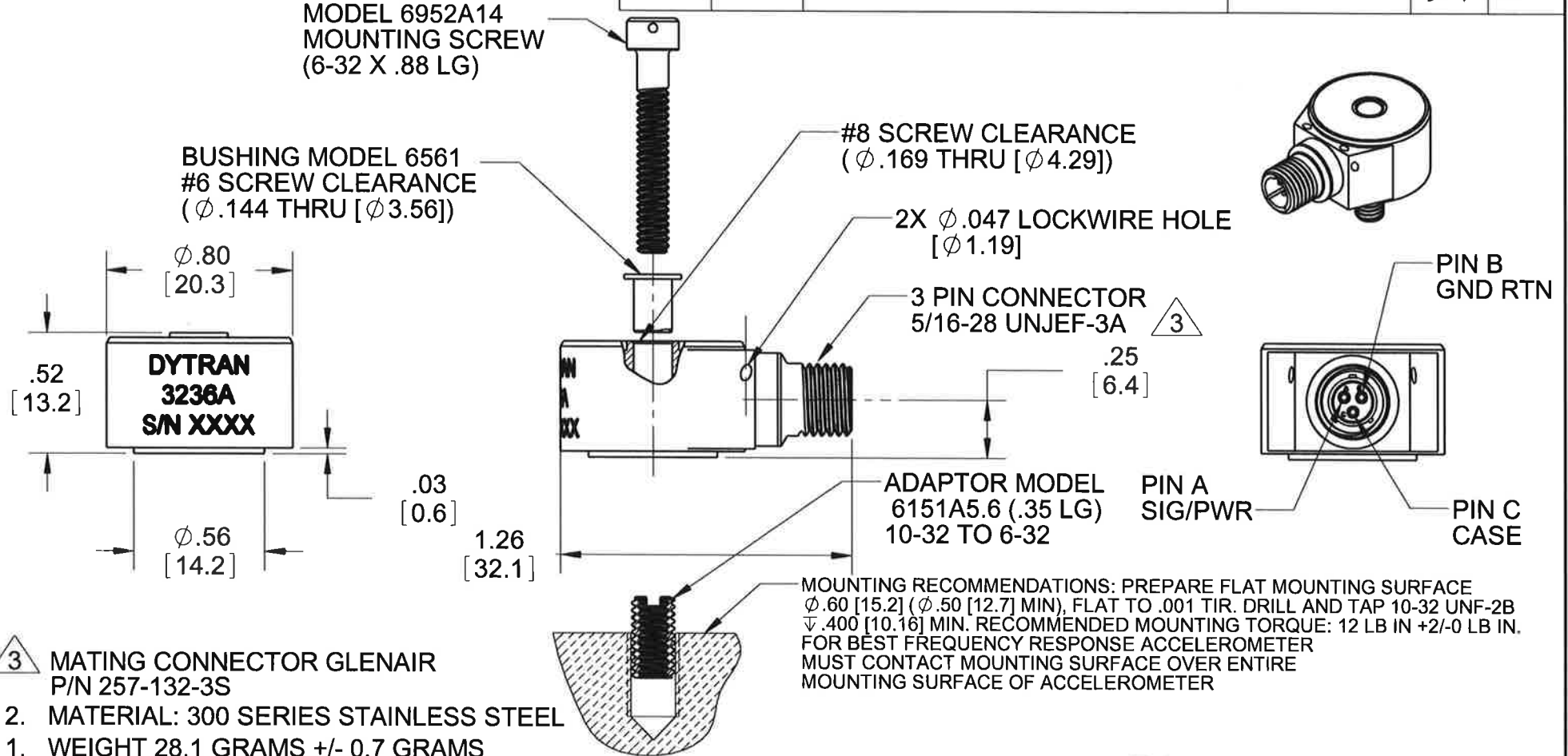


PROPRIETARY AND CONFIDENTIAL

THE INFORMATION CONTAINED IN THIS DRAWING IS THE SOLE PROPERTY OF DYTRAN INSTRUMENTS INC. ANY REPRODUCTION IN PART OR AS A WHOLE WITHOUT THE WRITTEN PERMISSION OF DYTRAN INSTRUMENTS, INC. IS PROHIBITED

REVISIONS

REV	ECN	DESCRIPTION	BY/DATE	CHK	APPR
C	11987	SEE ECN	JS 05/13/15	LA	LN



- 3 MATING CONNECTOR GLENAIR P/N 257-132-3S**
- MATERIAL: 300 SERIES STAINLESS STEEL
 - WEIGHT 28.1 GRAMS +/- 0.7 GRAMS
- NOTES: UNLESS OTHERWISE SPECIFIED

USED ON	NEXT ASSY
APPLICATION	
THIRD ANGLE PROJECTION USA	

UNLESS OTHERWISE SPECIFIED:
 INTERPRET DIM & TOL PER ASME Y14.5M - 1994.
 REMOVE BURRS.
 COUNTERSINK INTERNAL THDS 90° TO MAJOR DIA.
 CHAM EXT THDS 45° TO MINOR DIA.
 THD LENGTHS AND DEPTHS ARE FOR MIN FULL THDS.
 THDS PER MIL-S-7742.
 DIMENSIONS APPLY AFTER FINISHING.

ALL MACHINED SURFACES. TOTAL RUNOUT WITHIN .005. BREAK SHARP EDGES .005 TO .010. MACHINED FILLET RADII .005 TO .015. WELDING SYMBOLS PER AWS A2.4. ABBREVIATIONS PER MIL-STD-12.

UNLESS OTHERWISE SPECIFIED: DIMENSIONS ARE IN INCHES. DIMENSIONS IN BRACKETS [] ARE IN MILLIMETERS. TOLERANCES ARE:

INCHES	METRIC	ANGLES
.XX ± .03	X ± 0.8	± 1°
.XXX ± .010	.XX ± 0.25	

MATERIAL

FINISH

DO NOT SCALE DRAWING

CONTRACT NO.	
APPROVALS	DATE
ORIG EP	08/17/09
CHK RA	09/10/09
APP DV	09/10/09
APP	

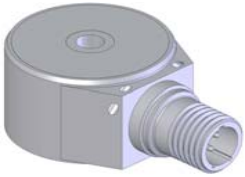
MASTER COPY ONLY IF IN RED
 Chatsworth, CA

DYTRAN INSTRUMENTS, INC.

TITLE: **OUTLINE/INSTALLATION DRAWING 3236A**

SIZE A	CAGE CODE 2W033	DWG. NO. 127-3236A	REV C
SCALE: 2:1	SOLIDWORKS	SHEET 1 OF 1	

MODEL NUMBER 3236A	PERFORMANCE SPECIFICATION	DOC NO. PS3236A
ACCELEROMETER, IEPE		REV C, ECN 7931, 11/10/11



- INTERNALLY CASE ISOLATED
- HERMETICALLY SEALED
- HIGH FREQUENCY

Actual size

		ENGLISH			SI
PHYSICAL					
Weight		0.98	oz		28.1
Mounting Provision		Thru Hole			Thru Hole
Connector [1]	Type	3 Pin			3 Pin
Material		304L			304L
PERFORMANCE					
Sensitivity +/- 5% [2]		10	mV/g		1.02
Range F.S. For ± 5 Volts Output		500	g pk		4900
Frequency Range, ± 5%		1.2 to 10000	Hz		1.2 to 10000
Resonant Frequency, NOM		> 35	KHz		> 35
Equivalent Electrical Noise Floor		0.009	g rms		0.0882
Linearity [3]		± 1	%F.S		± 1
Transverse Sensitivity, Max.		5%			5%
Strain Sensitivity @250µε		0.04	g/µε		0.04
Spectral Noise					
	1 Hz	3000	µGrms/sqr(Hz)		29400
	10Hz	700	µGrms/sqr(Hz)		6860
	100Hz	200	µGrms/sqr(Hz)		1960
	1000Hz	100	µGrms/sqr(Hz)		980
	10000Hz	90	µGrms/sqr(Hz)		882
			µm/s ² rms/sqr(Hz)		
ENVIRONMENTAL					
Maximum Vibration		5000	±gpk		49000
Maximum Shock		10000	±gpk		98000
Temperature Range		-60 to +300	°F		-55 to +149
Seal		Hermetic			Hermetic
Coefficient Of Thermal Sensitivity		0.02	%/°F		0.02
ELECTRICAL					
Supply Current [4]		2 to 20	mA		2 to 20
Compliance Voltage Range		18 to +30	V		18 to +30
Output Impedance TYP		150	Ω		150
Bias Voltage		+7.5 to +9.5	VDC		+7.5 to +9.5
Discharge Time Constant		0.4 to 1.0	sec		0.4 to 1.0
Output Signal Polarity [5]		positive			positive
Electrical Isolation [6]		10	GΩ		10

This family also includes:

Model	Sensitivity (mV/g)	Range (Gpeak)	Resolution (Grms)	Oper. Temp(°F)	TC

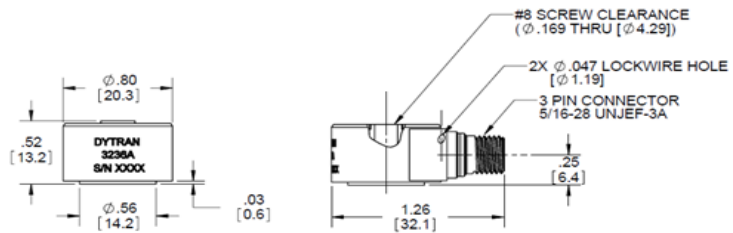
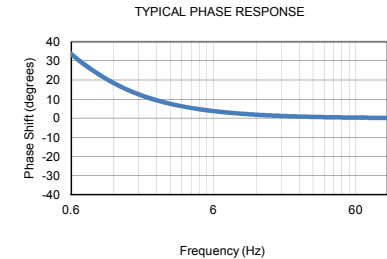
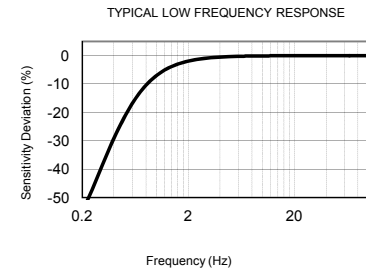
Please, refer to the performance specifications of the products in this family for detailed description.

Supplied Accessories:

- 1) Model 6561 Bushing for #6 screw
- 2) Model 6952A mounting screw 6-32
- 3) Accredited Calibration Certificate (ISO 17025)

Notes:

- [1] Mating connector Glenair P/N 257-132-3S
- [2] Measured at 100 Hz, 1 gram per ISA RP 37.2.
- [3] Measured using zero-based best straight-line method, % of F.S. or any lesser range.
- [4] Do not apply power to this device without current limiting, 20 mA MAX. To do so will destroy the integral IC amplifier
- [5] For acceleration perpendicular and away from the mounting surface
- [6] Electrical ground isolated from sensor case.
- [7] In the interest of constant product improvement, we reserve the right to change the specification without notice.



Units on the line drawing are in inches, units in brackets are in millimeters. Refer to 127-3236A for more information.



21592 Marilla Street, Chatsworth, California 91311 Phone: 818.700.7818 Fax: 818.700.7880 www.dytran.com
For permission to reprint this content, please contact info@dytran.com