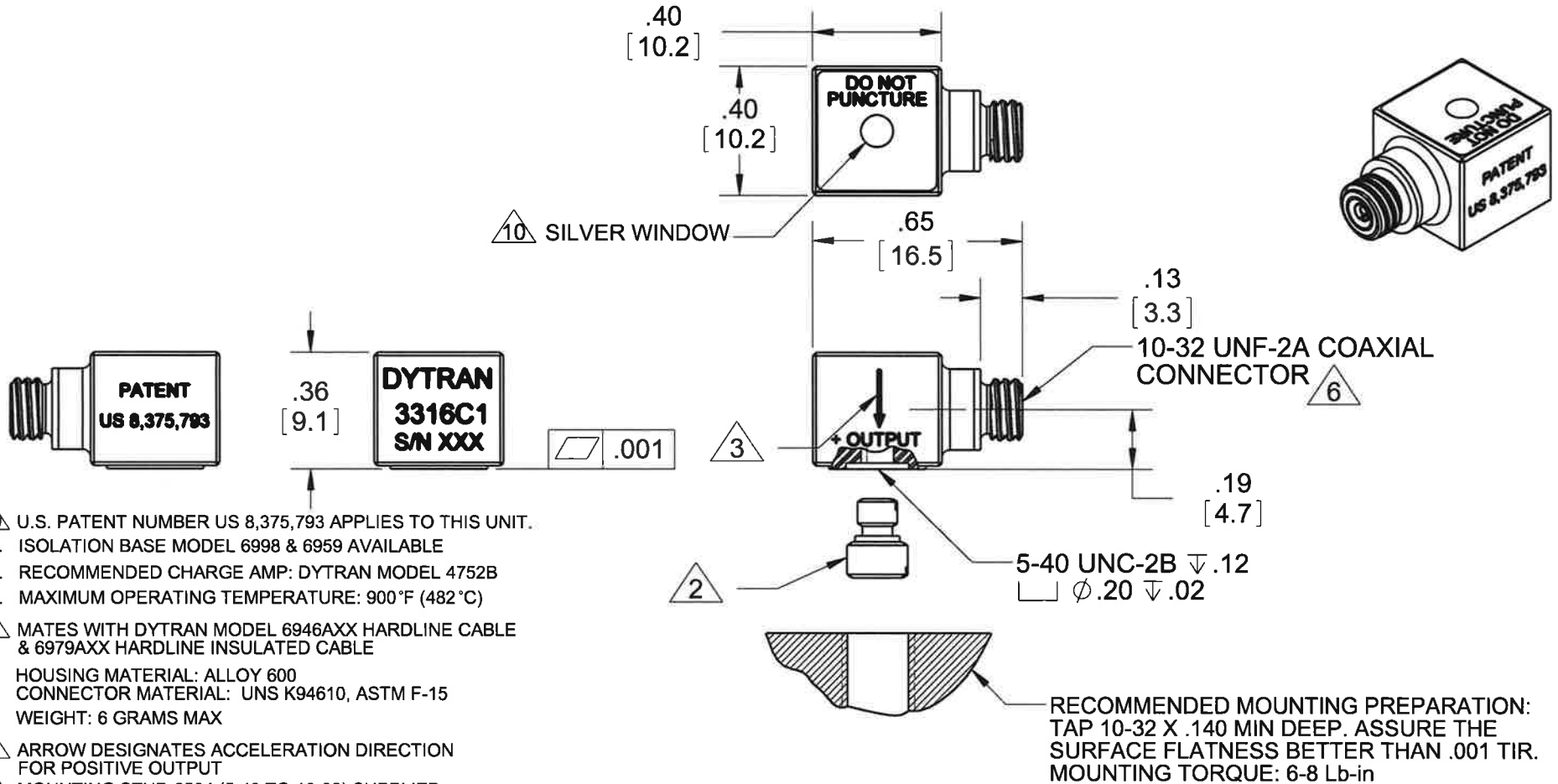


PROPRIETARY AND CONFIDENTIAL

THE INFORMATION CONTAINED IN THIS DRAWING IS THE SOLE PROPERTY OF DYTRAN INSTRUMENTS INC. ANY REPRODUCTION IN PART OR AS A WHOLE WITHOUT THE WRITTEN PERMISSION OF DYTRAN INSTRUMENTS INC. IS PROHIBITED

REVISIONS

REV	ECN	DESCRIPTION	BY/DATE	CHK	APPR
C	11957	NOTE 4 WAS: WEIGHT: 5 GRAMS MAX	JS 05/07/15	LA	



- 10 U.S. PATENT NUMBER US 8,375,793 APPLIES TO THIS UNIT.
 - 9. ISOLATION BASE MODEL 6998 & 6959 AVAILABLE
 - 8. RECOMMENDED CHARGE AMP: DYTRAN MODEL 4752B
 - 7. MAXIMUM OPERATING TEMPERATURE: 900°F (482°C)
 - 6 MATES WITH DYTRAN MODEL 6946AXX HARDLINE CABLE & 6979AXX HARDLINE INSULATED CABLE
 - 5. HOUSING MATERIAL: ALLOY 600
CONNECTOR MATERIAL: UNS K94610, ASTM F-15
 - 4. WEIGHT: 6 GRAMS MAX
 - 3 ARROW DESIGNATES ACCELERATION DIRECTION FOR POSITIVE OUTPUT
 - 2 MOUNTING STUD 6584 (5-40 TO 10-32) SUPPLIED
 - 1. SENSITIVITY: 1 TO 2 pC/g
- NOTES: UNLESS OTHERWISE SPECIFIED

RECOMMENDED MOUNTING PREPARATION:
TAP 10-32 X .140 MIN DEEP. ASSURE THE SURFACE FLATNESS BETTER THAN .001 TIR.
MOUNTING TORQUE: 6-8 Lb-in

USED ON	NEXT ASSY
APPLICATION	
THIRD ANGLE PROJECTION USA	

UNLESS OTHERWISE SPECIFIED:
INTERPRET DIM & TOL PER ASME Y14.5M - 1994.
REMOVE BURRS.
COUNTERSINK INTERNAL THDS 90° TO MAJOR DIA.
CHAM EXT THDS 45° TO MINOR DIA.
THD LENGTHS AND DEPTHS ARE FOR MIN FULL THDS.
THDS PER MIL-S-7742.
DIMENSIONS APPLY AFTER FINISHING.

ALL MACHINED SURFACES TOTAL RUNOUT WITHIN .005.
BREAK SHARP EDGES .005 TO .010.
MACHINED FILLET RADII .005 TO .015.
WELDING SYMBOLS PER AWS A2.4.
ABBREVIATIONS PER MIL-STD-12.

UNLESS OTHERWISE SPECIFIED:
DIMENSIONS ARE IN INCHES. DIMENSIONS IN BRACKETS [] ARE IN MILLIMETERS
TOLERANCES ARE:
INCHES METRIC ANGLES
.XX ± .03 .X ± 0.8 ± 1°
.XXX ± .010 .XX ± 0.25

MATERIAL

FINISH

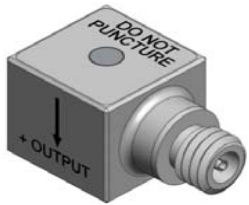
DO NOT SCALE DRAWING

CONTRACT NO.

APPROVALS		DATE
ORIG	JS	10/12/11
CHK	RA	01/18/12
APP	DV	01/19/12
APP		

TITLE: **OUTLINE/INSTALLATION DRAWING, 3316C1**

SIZE	CAGE CODE	DWG. NO.	REV
A	2W033	127-3316C1	C
SCALE: NONE	SOLIDWORKS	SHEET 1 OF 1	



- MINIATURE SIZE
- HERMETICALLY SEALED
- HIGH TEMPERATURE OPERATION

PHYSICAL

Weight, Max
Size
Connector [3]
Mounting Provision : Tapped Hole
Material
Element Style

Square x Height
Type
Type
Housing
Connector
Material
Type

	ENGLISH		SI	
Weight, Max	0.21	oz	6.0	grams
Size	.40 x .36	Inches	10.16 x 9.10	mm
Connector [3]	10-32 Coaxial		10-32 Coaxial	
Mounting Provision : Tapped Hole	5-40 UNC-2B		5-40 UNC-2B	
Material	Alloy 600		Alloy 600	
Element Style	UNS K94610		UNS K94610	
	Single Crystal		Single Crystal	
	Planar Shear		Planar Shear	

PERFORMANCE

Sensitivity [1]
Range F.S for ± 5 Volts Output
Frequency Range, ±10%
Resonant Frequency
Capacitance
Linearity [2]
Phase Response (±5°)
Maximum Transverse sensitivity
Strain Sensitivity
Insulation resistance, (Connector pin to case)
Coefficient of Thermal Sens.
Ground Isolation

	ENGLISH		SI	
Sensitivity [1]	1 to 2	pC/g	0.10 to 0.20	pC/m/s ²
Range F.S for ± 5 Volts Output	±5000	G's	±49050	m/s ²
Frequency Range, ±10%	[4] to 10000	Hz	[4] to 10000	Hz
Resonant Frequency	> 45	kHz	> 45	kHz
Capacitance	120	pF	120	pF
Linearity [2]	± 1%	% F.S.	± 1%	% F.S.
Phase Response (±5°)	[4] to 3000	Hz	[4] to 3000	Hz
Maximum Transverse sensitivity	5	%	5	%
Strain Sensitivity	0.002	g/μe	0.02	m/s ² /μe
Insulation resistance, (Connector pin to case)	at 75°F > 5	MΩ	at 75°F > 5	MΩ
	at 900°F > 0.25	MΩ	at 900°F > 0.25	MΩ
Coefficient of Thermal Sens.	0.02	%F	0.02	%F
Ground Isolation	Case Ground		Case Ground	

ENVIRONMENTAL

Maximum Vibration
Maximum Shock
Temperature Range
Seal

	ENGLISH		SI	
Maximum Vibration	±6000	G, peak	±58860	m/s ² , peak
Maximum Shock	±10000	G, peak	±98100	m/s ² , peak
Temperature Range	-60 to+900	°F	-51 to+482	°C
Seal	Hermetic		Hermetic	

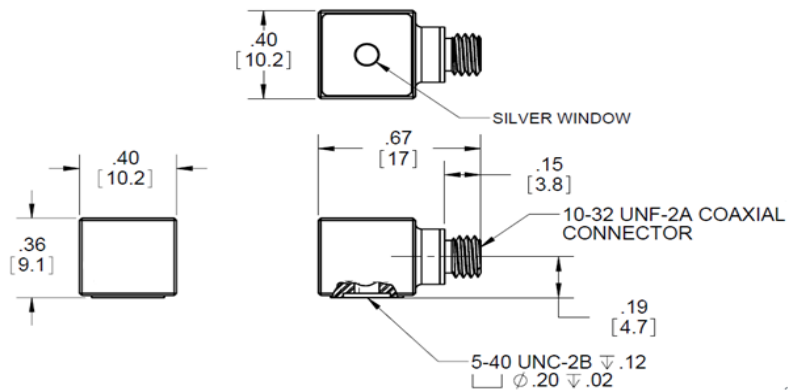
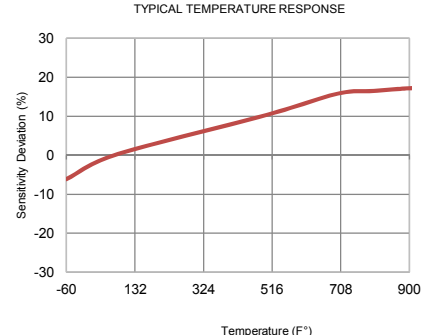
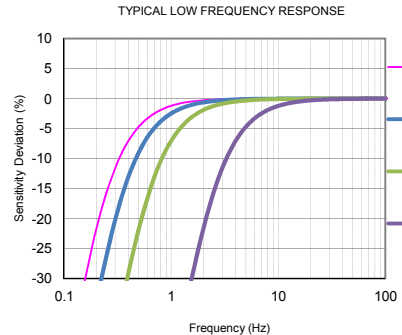
This family also includes:

Model	Sensitivity (pC/g)	Range F.S (G's)	Output Polarity	Temperature (°F)
3316C	1 to 2	± 5000	Positive when mounted on its base	-60 to+900

Refer to the performance specifications of the products in this family for detailed description.

- Supplied Accessories:**
- 1) Accredited calibration certificate (ISO 17025)
 - 2) Model 6584 mounting stud (5-40 to 10-32), qty 1

- Notes:**
- [1] Measured at 100Hz, 1 Grms per ISA RP 37.2
 - [2] Measured using zero-based straight line method, % of F.S. or any lesser range.
 - [3] Mates with Dytran cable 6946AXX hardline cable and 6979AXX hardline insulated cable.
 - [4] Low frequency response and phase response is function of charge amplifier. See graph below for example.
 - [5] In the interest of constant product improvement, we reserve the right to change specifications without notice.
 - [6] Recommended charge amplifier: Dytran model 4754B, Series.
 - [7] Isolation mounting base model 6959 (triaxial) and 6998 (uniaxial) are available.
 - [8] U.S. Patent number US 8,375,793 B2 applies to this unit.



Units on the line drawing are in inches, units in brackets are in millimeters. Refer to 127-3316C1 for more information.

