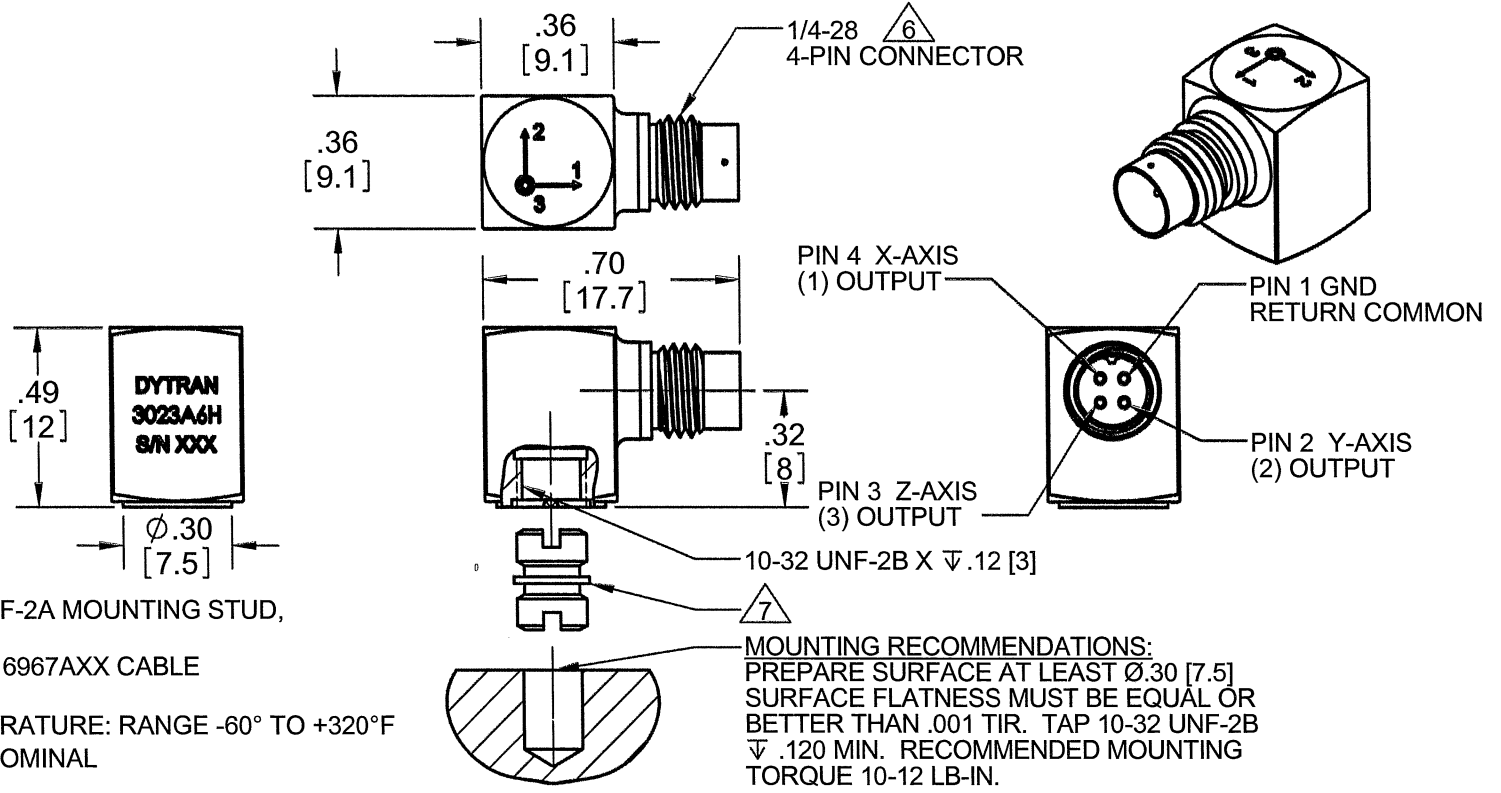


PROPRIETARY AND CONFIDENTIAL

THE INFORMATION CONTAINED IN THIS DRAWING IS THE SOLE PROPERTY OF DYTRAN INSTRUMENTS INC. ANY REPRODUCTION IN PART OR AS A WHOLE WITHOUT THE WRITTEN PERMISSION OF DYTRAN INSTRUMENTS INC. IS PROHIBITED

REVISIONS

| REV. | ECN | DESCRIPTION | BY/DATE | CHK | APPR |
|------|------|-----------------|----------------|-----|------|
| A | 7440 | INITIAL RELEASE | JS 04/05/11 | RS | DV |



- 7 MODEL 6200, 10-32 UNF-2A MOUNTING STUD, SUPPLIED.
- 6 MATES WITH DYTRAN 6967AXX CABLE (XX=LENGTH IN FEET)
- 5. OPERATIONAL TEMPERATURE: RANGE -60° TO +320°F
- 4. SENSITIVITY: 5mV/G NOMINAL
- 3. WEIGHT: 4 GRAMS
- 2. ARROWS INDICATE ACCELERATION DIRECTION FOR POSITIVE OUTPUT
- 1. MATERIAL: TITANIUM ALLOY

NOTES: UNLESS OTHERWISE SPECIFIED.

| | |
|-------------------------------|-----------|
| USED ON | NEXT ASSY |
| APPLICATION | |
| THIRD ANGLE PROJECTION USA | |

UNLESS OTHERWISE SPECIFIED:
 INTERPRET DIM & TOL PER ASME Y14.5M - 1994.
 REMOVE BURRS.
 COUNTERSINK INTERNAL THDS 90° TO MAJOR DIA.
 CHAM EXT THDS 45° TO MINOR DIA.
 THD LENGTHS AND DEPTHS ARE FOR MIN FULL THDS.
 THDS PER MIL-S-7742.
 DIMENSIONS APPLY AFTER FINISHING.
 ALL MACHINED SURFACES. TOTAL RUNOUT WITHIN .005.
 BREAK SHARP EDGES .005 TO .010.
 MACHINED FILLET RADII .005 TO .015.
 WELDING SYMBOLS PER AWS A2.4.
 ABBREVIATIONS PER MIL-STD-12.

UNLESS OTHERWISE SPECIFIED:
 DIMENSIONS ARE IN INCHES. DIMENSIONS IN BRACKETS [] ARE IN MILLIMETERS
 TOLERANCES ARE:
 INCHES METRIC ANGLES
 .XX ± .03 X ± 0.8 ± 1°
 .XXX ± .010 .XX ± 0.25

MATERIAL

FINISH

DO NOT SCALE DRAWING

| | |
|--------------|----------|
| CONTRACT NO. | |
| APPROVALS | DATE |
| ORIG JS | 03/31/11 |
| CHK RS | 05/13/11 |
| APP DV | 5/10/11 |
| APP | |

DYTRAN
INSTRUMENTS, INC. Chatsworth, CA

TITLE: **OUTLINE/INSTALLATION DRAWING, 3023A6H**

| | | | |
|---------------|------------------------|-----------------------------|--------------|
| SIZE A | CAGE CODE 2W033 | DWG. NO. 127-3023A6H | REV A |
| SCALE: NONE | SOLIDWORKS | SHEET 1 OF 1 | |

| | | |
|---------------------------------------|--------------------------------------|------------------------------------|
| MODEL NUMBER 3023A6H | PERFORMANCE SPECIFICATION | DOC NO. PS3023A6H |
| | ACCELEROMETER, TRIAXIAL, IEPE | REV G, ECN 14529, 09/24/18 |



- HIGH TEMPERATURE
- HERMETICALLY SEALED
- MINIATURE SIZE

PHYSICAL

| | ENGLISH | | SI | |
|-------------------------------|-------------------|----|-------------------|-------|
| Weight | 0.14 | oz | 4.0 | grams |
| Mounting | 10-32 Tapped Hole | | 10-32 Tapped Hole | |
| Connector [1] | 4-pin | | 4-pin | |
| Material, Housing / Connector | Titanium | | Titanium | |
| Sensing Element | Quartz | | Quartz | |
| Element Style | Shear | | Shear | |

PERFORMANCE

| Sensitivity, -10 + 15% [2] | 5 | mV/g | 0.51 | mV/m/s ² |
|--------------------------------|------------|--------------|------------|----------------------------|
| Range F.S. (each axis) | ±1000 | g | ±9810 | m/s ² |
| Frequency Response, -5/+15% | 1 & 2 Axis | 1.5 to 4000 | Hz | 1.5 to 4000 |
| | 3 Axis | 1.5 to 10000 | Hz | 1.5 to 10000 |
| Resonant Frequency | 30 | kHz | 30 | kHz |
| Broad Band Resolution | 0.015 | Grms | 0.147 | m/s ² rms |
| Spectral Noise | 1.25Hz | 0.006 | Grms/√(Hz) | m/s ² rms/√(Hz) |
| | 10Hz | 0.002 | Grms/√(Hz) | m/s ² rms/√(Hz) |
| | 100Hz | 0.0004 | Grms/√(Hz) | m/s ² rms/√(Hz) |
| | 1000Hz | 0.0001 | Grms/√(Hz) | m/s ² rms/√(Hz) |
| | 10000Hz | 0.00008 | Grms/√(Hz) | m/s ² rms/√(Hz) |
| Linearity [3] | 1 | %F.S. | 1 | %F.S. |
| Maximum Transverse Sensitivity | 6 | % | 6 | % |
| Signal Polarity | [5] | | [5] | |

ENVIRONMENTAL

| Maximum Vibration | ±1200 | g pk | ±11768 | m/s ² |
|--------------------|-------------|------|-------------|------------------|
| Maximum Shock | 5000 | g pk | 49050 | m/s ² |
| Temperature Range | -60 to +320 | °F | -51 to +160 | °C |
| Environmental Seal | Hermetic | | Hermetic | |

ELECTRICAL

| Supply Current Range [4] | 2 to 20 | mA | 2 to 20 | mA |
|--------------------------|---------------|--------|---------------|--------|
| Compliance Voltage Range | +18 to +30 | VDC | +18 to +30 | VDC |
| Output Impedance, Typ. | 100 | Ω | 100 | Ω |
| Output Bias Voltage | 7 to 11 | VDC | 7 to 11 | VDC |
| Discharge Time Constant | 0.3 to 1.5 | Sec | 0.3 to 1.5 | Sec |
| Electrical Isolation | Case Grounded | GΩ,min | Case Grounded | GΩ,min |

This family also includes:

| Model | Sensitivity (mV/g) | Range (Gpeak) | Resolution (Grms) | Oper. Temp(°F) | TC |
|-------|--------------------|---------------|-------------------|----------------|----|
| | | | | | |
| | | | | | |
| | | | | | |

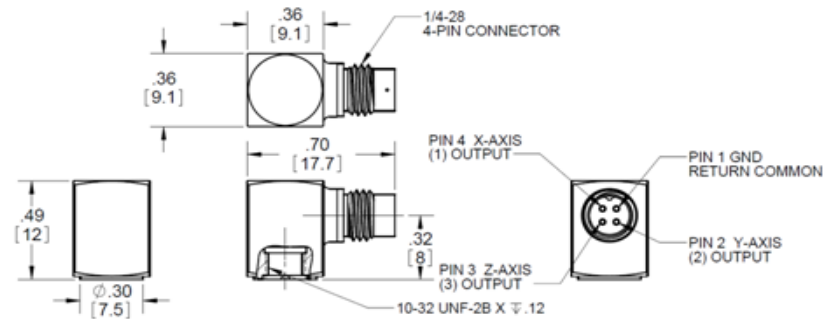
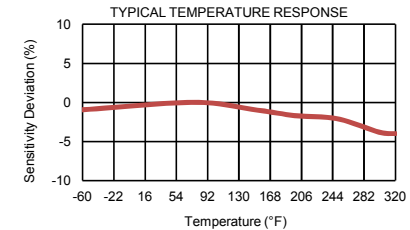
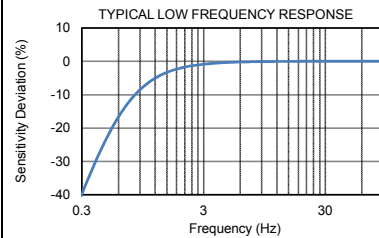
Refer to the performance specifications of the products in this family for detailed description

Supplied Accessories:

- 1) Accredited Calibration Certificate (ISO 17025)
- 2) Model 6200 Mounting Stud, Qty 1.

Notes:

- [1] Connector mates with Dytran's cable assy. Model 6967AXX. (xx = length in feet)
- [2] Measured At 100 Hz, 1 Grms per ISA RP 37.2
- [3] Measured using zero-based best straight-line method, % of F.S. or any lesser range.
- [4] Do not apply power to this system without current limiting, 20 mA MAX. To do so will destroy the amplifier.
- [5] Positive for motion in direction of arrows on housing.
- [6] In the interest of constant product improvement, we reserve the right to change the specification without notice.



Units on the line drawing are in inches, units in brackets are in millimeters. Refer to 127-3023A6H for more information.

