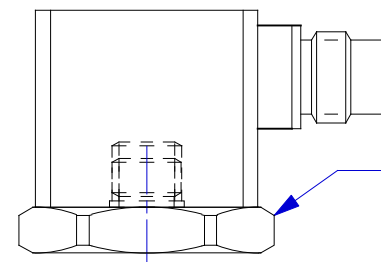
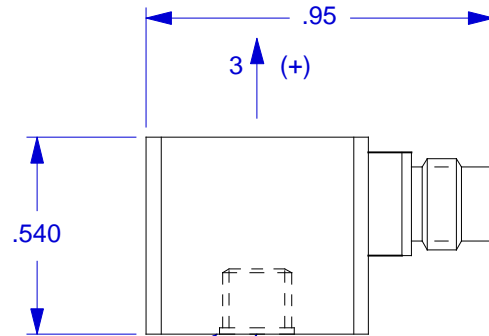
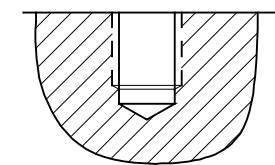
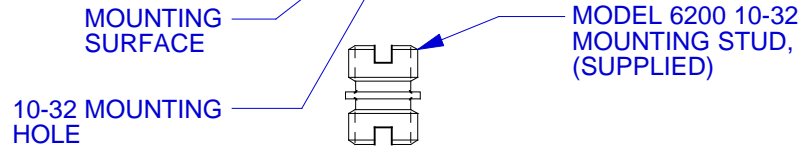


PINOUT
 PIN #1 SIG/PWR AXIS 1 (X)
 PIN #2 SIG/PWR AXIS 2 (Y)
 PIN #3 SIG/PWR AXIS 3 (Z)
 PIN #4 GND RETURN, COMMON

CONNECTOR MATES WITH
 DYTRAN CABLE 6430AXX



SUGGESTED MOUNTING METHOD:
 THREAD MODEL 6213 ADAPTOR
 INTO 3093A1 HOUSING. ADHESIVE
 MOUNT TO TEST SURFACE, (NO 10-
 32 PORT NEEDED)



MOUNTING PORT PREPARATION:
 SELECT SURFACE FLAT TO .001 TIR
 DRILL #21 (.159) DIA. X .250 DEEP
 BOTTOM TAP 10-32 UNF-2B X .200
 MIN. DEPTH PERF. THD.

4. MOUNTING TORQUE ON HEX FLATS OF 6213 ADAPTOR: 10 TO 15 LB-INCHES. DO NOT OVERTORQUE.
3. SIGNAL POLARITY IS POSITIVE FOR ACCELERATION IN THE DIRECTION OF AXES ARROWS.
2. SIG/PWR GROUND IS ISOLATED FROM CASE, 10 MEGOHMS, MIN.
1. ENVIRONMENTSL SEAL: HERMETIC.

EXCEPT AS OTHERWISE NOTED

ALL DIMENSIONS IN INCHES
 TOLERANCE: .XXX = ± .XX = ±

SURFACE FINISH EXCEPT AS NOTED ✓

BREAK EDGES TO DEBURR RADIUS OR CHAMFER

△ THESE DIAS ⊙ TO T.I.R.

FILLETS - MAX RAD.

		CHATSWORTH, CA.	
DATE 6/22/00	PART NO. MODEL 3093B1		
DRAWN N.C.	CHECKED R.A.	MAT'L	
APPROVED	NEXT ASSEMBLY	USED ON	3093B1
TITLE			DWG NO.
OUTLINE/INSTALLATION DRAWING, MODEL 3093B1			127-3093B1
			SHEET 1 OF 1

Model Number	PERFORMANCE SPECIFICATION		DOC NO
3093B1	Accelerometer, Triaxial, IEPE		PS3093B1
			REV A, ECN 13104, 11/16/16



- HIGH SENSITIVITY
- HERMETICALLY SEALED
- STUD MOUNTED

ENGLISH		SI	
---------	--	----	--

PHYSICAL

Weight	0.5	oz	13.5	grams
Mounting Provision	10-32 Stud		10-32 Stud	
Connector [1]	4-pin	Type	4-pin	
	Titanium Alloy	Material	Titanium Alloy	
Housing	Titanium Alloy	Material	Titanium Alloy	
	Case Isolated	Isolation	Case Isolated	
Sensing Element	Ceramic	Material	Ceramic	
	Shear	Mode	Shear	

PERFORMANCE

Sensitivity, +15/-10% [2]	100	mV/g	10.2	mV/m/s ²
Acceleration Range	50	Gpeak	491	m/s ² peak
Frequency Range, ±10%	2-5000	Hz	2-5000	Hz
Resonance Frequency	> 30	kHz	> 30	kHz
Linearity [3]	1	%F.S.	1	%F.S.
Transverse Sensitivity, Max.	6	%	6	%
Noise floor	0.0007	Grms	0.007	m/s ² rms

ELECTRICAL

Supply Current Range [4]	2 to 20	mA	2 to 20	mA
Compliance Voltage Range	+18 to +30	VDC	+18 to +30	VDC
Output Impedance, Typ.	100	Ω	100	Ω
Output Bias Voltage	+11 to +13	VDC	+11 to +13	VDC
Discharge Time Constant	0.5 to 1.5	sec	0.5 to 1.5	sec

ENVIRONMENTAL

Shock Max	7000	g pk	68670	m/s ²
Vibration Max	3000	g pk	29430	m/s ²
Operating Temperature	-60 to +225	°F	-51 to +107	°C
Seal	Hermetic		Hermetic	°C

This family also includes:

Model	Sensitivity (mV/g)	Range (Gpeak)	Resolution (Grms)	Oper. Temp(°F)	TC

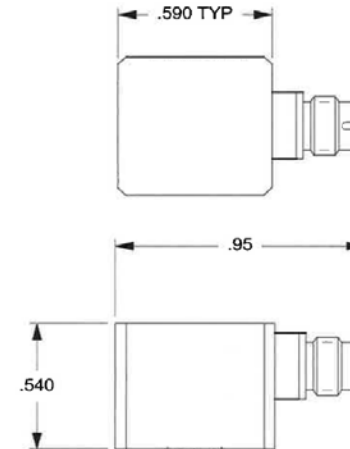
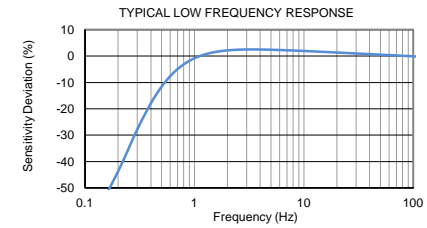
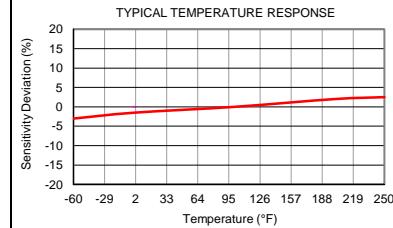
Refer to performance specifications of the products in this family for detailed description.

Supplied Accessories:

- 1) Model 6200 Mounting Screw
- 2) Accredited Calibration Certificate (ISO 17025)

Notes:

- [1] Glass to Metal seal connector. Mates with Dytran cable Model 6430AXX (XX=length in feet)
- [2] Measured At 100 Hz, 1 Grms per ISA RP 37.2
- [3] Linearity is % of specified full scale (or any less full-scale range), zero-based best fit straight line method.
- [4] Do not apply power to this device without current limiting, 20mA Max. To do so will destroy the integral IC amplifier



Units on the line drawing are in inches, units in brackets are in millimeters. Refer to 127-3093B1 for more information.



21592 Marilla Street, Chatsworth, California 91311 Phone: 818.700.7818 Fax: 818.700.7880 www.dytran.com
 For permission to reprint this content, please contact info@dytran.com