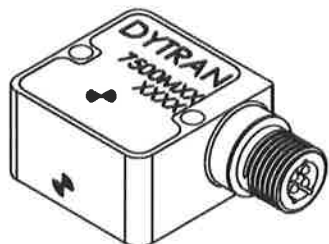


PROPRIETARY AND CONFIDENTIAL

THE INFORMATION CONTAINED IN THIS DRAWING IS THE SOLE PROPERTY OF DYTRAN INSTRUMENTS INC. ANY REPRODUCTION IN PART OR AS A WHOLE WITHOUT THE WRITTEN PERMISSION OF DYTRAN INSTRUMENTS INC. IS PROHIBITED

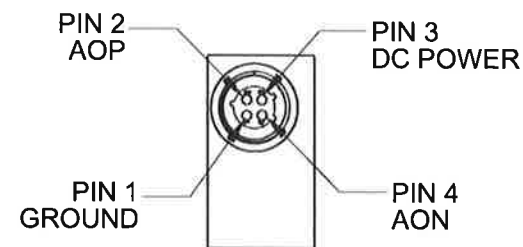
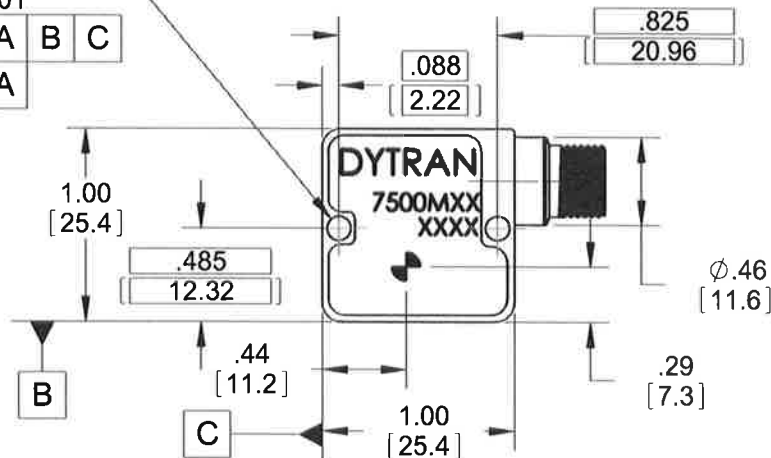
REVISIONS

REV	ECN	DESCRIPTION	BY/DATE	CHK	APPR
D	9192	ADDED GDT	AB 09/18/12	EP	DV
E	10755	REVISED TO REFLECT UPDATED HOUSING	JS 01/30/14	RA	DV
F	11049	SEE ECN	EC 06/06/14	JS	



2X R.063^{+0.010}_{-.001} THRU

ϕ .020 (M)	A	B	C
ϕ .006 (M)	A		



MODEL	SENSITIVITY
7500M10	40 mV/g
7500M11	5 mV/g

5. MOUNT TORQUE: 5-8 LB-IN

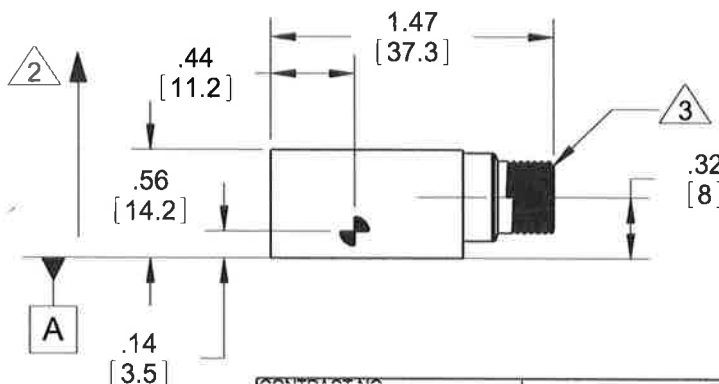
4 DELETED

3 MATES WITH GLENAIR PLUG 800-006-06Z16-4SX

2 ARROW INDICATES ACCELERATION DIRECTION FOR POSITIVE OUTPUT

1. WEIGHT: 45 GRAMS MAX

NOTES: UNLESS OTHERWISE SPECIFIED



UNLESS OTHERWISE SPECIFIED: INTERPRET DIM & TOL PER ASME Y14.5M - 1994. REMOVE BURRS. COUNTERSINK INTERNAL THDS 90° TO MAJOR DIA. CHAM EXT THDS 45° TO MINOR DIA. THD LENGTHS AND DEPTHS ARE FOR MIN FULL THDS. THDS PER MIL-S-7742. DIMENSIONS APPLY AFTER FINISHING.	
7500M10, M11	USED ON NEXT ASSY
APPLICATION	
THIRD ANGLE PROJECTION USA	
ALL MACHINED SURFACES TOTAL RUNOUT WITHIN .005. BREAK SHARP EDGES .005 TO .010. MACHINED FILLET RADII .005 TO .015. WELDING SYMBOLS PER AWS A2.4. ABBREVIATIONS PER MIL-STD-12.	

UNLESS OTHERWISE SPECIFIED: DIMENSIONS ARE IN INCHES. DIMENSIONS IN BRACKETS [] ARE IN MILLIMETERS TOLERANCES ARE:		
INCHES	METRIC	ANGLES
.XX ± .03	.X ± 0.8	± 1°
.XXX ± .010	.XX ± 0.25	
MATERIAL		
FINISH		
DO NOT SCALE DRAWING		

CONTRACT NO.


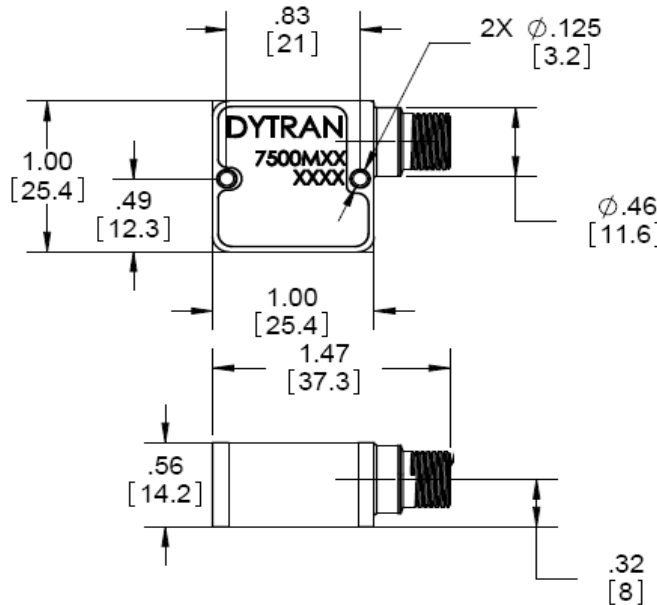



TITLE:

OUTLINE/INSTALLATION,
ACCELEROMETER, 7500M10, M11

APPROVALS		DATE
ORIG	DV	09/07/10
CHK	DV	10/27/10
APP	SA	10/29/10
APP		6/15/14

SIZE	CAGE CODE	DWG. NO.	REV
A	2W033	127-7500M10	F
SCALE: NONE		SOLIDWORKS	SHEET 1 OF 1

Model Number 7500M10		PERFORMANCE SPECIFICATION				DOC NO PS7500M10																																					
		VARIABLE CAPACITANCE ACCELEROMETER				REV C, ECN 7684, 07/11/11																																					
		<ul style="list-style-type: none">• VARIABLE CAPACITANCE ACCELEROMETER• DIFFERENTIAL MODE• HERMETICALLY SEALED• DC RESPONSE				This family also includes: <table><tr><th>Model</th><th>Input Range (g)</th><th>Frequency response (Hz)</th><th>Sensitivity Differential, ±10% (mV/g)</th><th>Max.Shock (gpk)</th><th>Noise Differential (µg rms/vHz)</th></tr><tr><td>7500M11</td><td>± 400</td><td>0-300</td><td>5</td><td>5000</td><td>400</td></tr><tr><td></td><td></td><td></td><td></td><td></td><td></td></tr><tr><td></td><td></td><td></td><td></td><td></td><td></td></tr><tr><td></td><td></td><td></td><td></td><td></td><td></td></tr><tr><td></td><td></td><td></td><td></td><td></td><td></td></tr></table>		Model	Input Range (g)	Frequency response (Hz)	Sensitivity Differential, ±10% (mV/g)	Max.Shock (gpk)	Noise Differential (µg rms/vHz)	7500M11	± 400	0-300	5	5000	400																								
Model	Input Range (g)	Frequency response (Hz)	Sensitivity Differential, ±10% (mV/g)	Max.Shock (gpk)	Noise Differential (µg rms/vHz)																																						
7500M11	± 400	0-300	5	5000	400																																						
PHYSICAL Weight, Max Connector Mounting Material		Type Thru Holes	Refer to the performance specifications of the products in this family for detailed description.																																								
		Supplied Accessories: 1) Accredited calibration certificate (ISO 17025) 2) Two mounting screws model # 6935																																									
PERFORMANCE Input Range Frequency Response (-3dB), ± 50Hz [1] Sensitivity Differential, ±10% [2] Output Noise, Differential ,Typ Non-Linearity, Max [4] Transverse Sensitivity, Max Scale Factor Calibration Error, Max Zero Measured Output		Notes: [1] Low pass first order filter, corner frequency at 300Hz. [2] Single ended sensitivity is half of values shown. [3] Over the rated temperature range. [4] -90% to +90% of Full Scale. [5] In the interest of constant product improvement, we reserve the right to change specifications without notice.																																									
																																											
		Units on the line drawing are in inches, dimensions in brackets [] are in millimeters. Refer to 127-7500M10 for more information.																																									
ENVIRONMENTAL Maximum Mechanical Shock Bias Temperature Shift ,Max [3] Bias Calibration Error Operating Temperature Range Scale Factor Temperature Shift [3] Seal																																											
ELECTRICAL Output Common Mode Voltage, TYP Output Impedence,Nom Operating Voltage Operating Current (AOP & AON open) Power Supply Rejection Ratio																																											



21592 Marilla Street, Chatsworth, California 91311 Phone: 818.700.7818 Fax:818.700.7880 www.dytran.com
For permission to reprint this content, please contact info@dytran.com