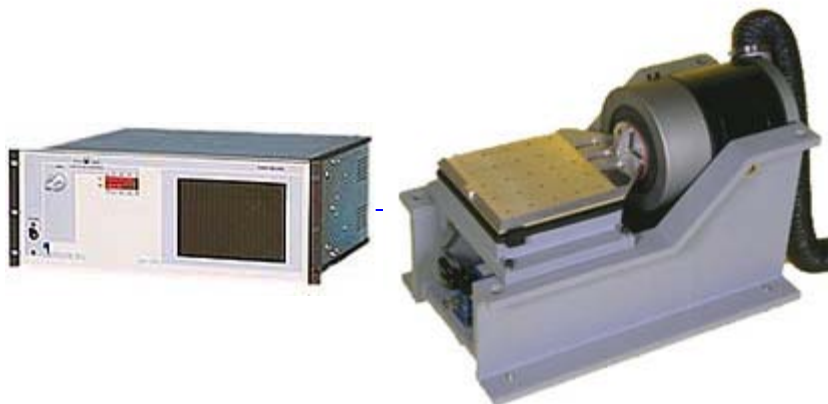




>> Home

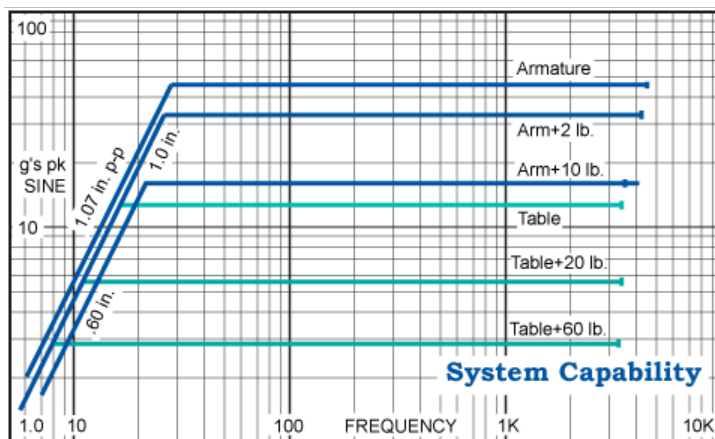
LW127.141-225D12 DuoBase System



The LW127.141-225 system utilizes the ET-127 shaker in a lower force output system. Suitable for larger loads that don't require high vibration levels, the 225 system offers the benefits of the larger shaker at a reduced price to give the maximum performance at low and high frequencies. Its large 12 inch Square oil film Slip Table mounting surface provides high load and off-center moment capability for applications where heavy or large loads are to be tested. The DB-127 also allows the ET-127 shaker to be uncoupled from the slip table and rotated into its vertical position allowing normal vertical testing of smaller components directly on the shakers armature. The Shakers internal high lateral stiffness carbon composite armature suspension reduces problems associated with off-center loads when operating vertically. Dual meters display the system operating levels and complete shaker and user interlocks help protect the system from accidental abuse.

General Specifications

Sine force	225 lbs force pk
Random force	110 lbf rms random
Shock force	240 lbf pk shock
Frequency Range:	
Horizontal, w/ Slip Table	DC to 3000 Hz
Vertical, no Slip Table	DC to 4,500 Hz
Maximum Acceleration:	
Horizontal, w/ Slip Table	12 g pk, bare table 5.8 g pk, 20 lb. load 2.9 g pk, 60 lb. load
Vertical, no Slip Table	45 g pk, bare table 32 g pk, 2 lb. load 15 g pk, 10 lb. load
Maximum Displacement:	1.0 inch pk-pk, bare table
Cooling:	Amplifier: forced air Shaker: cooling vacuum
Power Requirements:	3,500 VA @ 100*, 110*, 200, 220, or 240V, single phase 50/60 Hz



System Options

- [VL-144/VL-145 Vibration Controller](#)
- [SC-121 Sine Servo Controller](#)
- [SG-135 Manual Sine Controller](#)
- [HE-127-12S Head expander](#)
- [Rack Cabinet](#)
- [Accelerometer Package](#)
- [LS-127 Armature Load Support/](#)
- [AI-127 Base Isolation](#)



DB-127



LS-127



AI-127

System Components

- [ET-127 Electrodynamic Shaker](#)
- [PA-141 Linear Power Amplifier](#)
- [DB-127 - DuoBase](#)
- [FS-127 Integrated Field Supply](#)
- [CB-127 Cooling Vacuum](#)
- Interconnect Cables and Hoses

*Consult the factory for low line voltage operation details.



2950 airway ave., a-16 • costa mesa, ca 92626 • phone (714) 549-1981 • fax (714) 549-8041