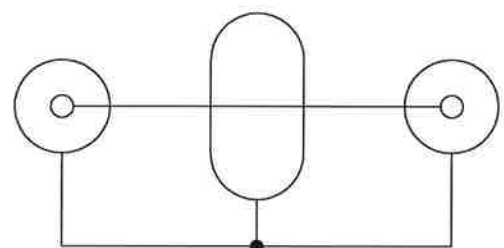
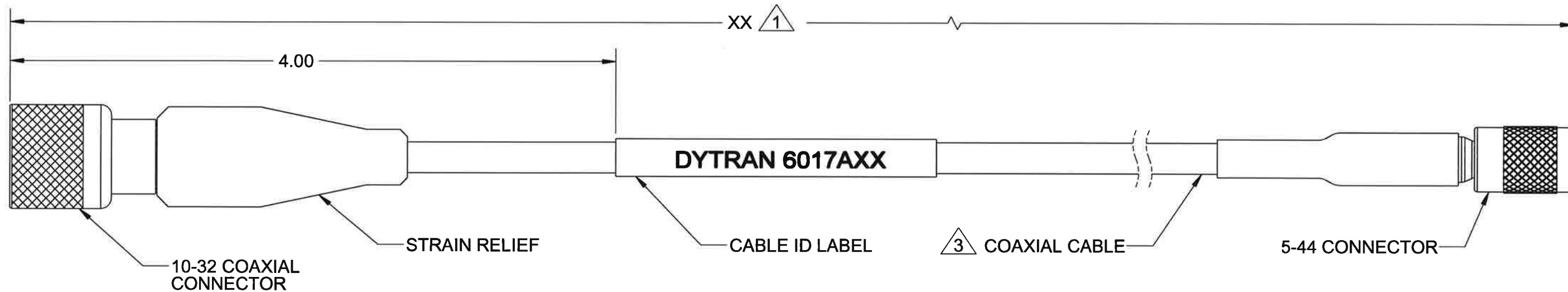


PROPRIETARY AND CONFIDENTIAL

THE INFORMATION CONTAINED IN THIS DRAWING IS THE SOLE PROPERTY OF DYTRAN INSTRUMENTS INC. ANY REPRODUCTION IN PART OR AS A WHOLE WITHOUT THE WRITTEN PERMISSION OF DYTRAN INSTRUMENTS INC. IS PROHIBITED

REVISIONS

REV.	ECN	DESCRIPTION	BY/DATE	CHK	APPR
D	12983	DRAWING TITLE, ADDED: LOW OUTGASSING	LA 09/30/16	pl	lw



SCHEMATIC DIAGRAM

1 CABLE LENGTH TOLERANCE	
≤1FT	+1/ -0 IN
>1 FT - 5 FT	+2/ -0 IN
> 5 FT - 10 FT	+4/ -0 IN
>10 FT - 25FT	+6 / -0 IN
>25 FT	+5% / -0%

3 CABLE SPECIFICATION	
SINGLE CONDUCTOR SHIELDED LOW NOISE CABLE	
AWG	30-7/38 SILVER PLATED COPPER
TEMP	200 DEG C WIRE RATED
WITHSTANDING VOLTAGE	2000 VAC
CONDUCTOR INSULATION	EXTRUDED PTFE, NATURAL, Ø.033 ±.002
CAPACITANCE (SHIELD TO CONDUCTOR)	32 pF/FT
LOW NOISE WRAP #1 & #2	CARBON TAPE
IMPEDANCE	50 OHMS
INDUCTANCE	.80 microH/FT
SHIELD	38 AWG SILVER PLATED COPPER BRAID, 95% MIN COVERAGE, Ø.054 NOM
RESISTANCE	.20 OHM
JACKET	WHT PTFE WRAP .005-.010 WALL
DIAMETER	Ø.074±.006
MINIUM BEND RADIUS	1 IN

UNLESS OTHERWISE SPECIFIED: INTERPRET DIM & TOL PER ASME Y14.5M - 1994. REMOVE BURRS. COUNTERSINK INTERNAL THDS 90° TO MAJOR DIA. CHAM EXT THDS 45° TO MINOR DIA. THD LENGTHS AND DEPTHS ARE FOR MIN FULL THDS. DIMENSIONS APPLY AFTER FINISHING		UNLESS OTHERWISE SPECIFIED: DIMENSIONS ARE IN INCHES. TOLERANCES ARE: DECIMALS .XX ±.01 .XXX ±.005		ANGLES ±1°	
APPROVALS		DATE			
DRAWN	NC	07/18/02		TITLE: OUTLINE/INSTALLATION DRAWING, LOW OUTGASSING, MODEL 6017A	
DESIGN	NC	07/18/02		SIZE B	
CHK	MPH	06/23/06		CAGE CODE 2W033	
APP	CES	06/23/06		DWG NO 127-6017A	
DO NOT SCALE DRAWING				REV D	
SCALE: NONE		PART NO: 127-6017A		SHEET 1 OF 1	

- 3 SEE TABLE FOR CABLE SPECIFICATIONS
- 2. TEMPERATURE: -55 °C TO 120°C
- 1 PART NUMBER 6017AXX (XX DENOTES LENGTH IN FEET)

NOTES: UNLESS OTHERWISE SPECIFIED