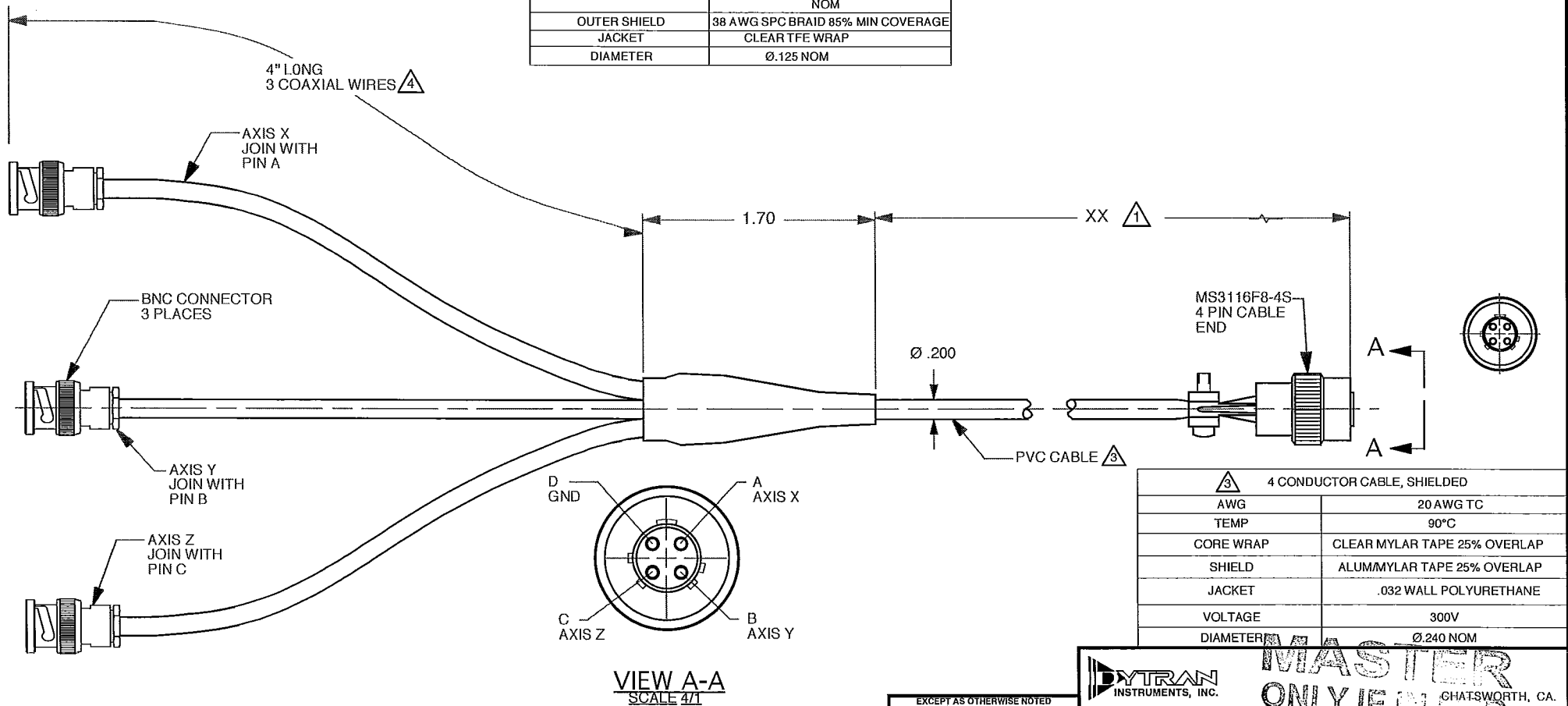


CABLE TOLERANCES			
ENGLISH		[METRIC]	
≤ 1 FT	+1/-0 IN	≤ 0.3 m	+25 mm -0 mm
>1 FT - 5 FT	+2/-0 IN	> 0.3 m - 1.5 m	+50 mm -0 mm
>5 FT - 10 FT	+4/-0 IN	>1.5 m -3 m	+100 mm -0 mm
>10 FT - 25 FT	+6/-0 IN	> 3 m -7.5 m	+150 mm -0 mm
>25 FT	+5%/-0%	> 7.5 m	+5%/-0%

SINGLE CONDUCTOR LOW NOISE CABLE	
AWG	30-7/38 NICKEL PLATED COPPER
TEMP	200°C
VOLTAGE	600 V
CONDUCTOR INSULATION	EXTRUDED PTFE, CLEAR, Ø.032 NOM
LOW NOISE WRAP #1 AND #2	CARBON TAPE
INNER SHIELD	38 AWG SILVER PLATED COPPER BRAID, 85% MIN COVERAGE, Ø.050 NOM
OUTER SHIELD	38 AWG SPC BRAID 85% MIN COVERAGE
JACKET	CLEAR TFE WRAP
DIAMETER	Ø.125 NOM

REV	ECN	DESCRIPTION	BY/DATE	CHK	APPR
A	9772	INITIAL RELEASE	AB 03/25/13	RA	17



4 CONDUCTOR CABLE, SHIELDED	
AWG	20 AWG TC
TEMP	90°C
CORE WRAP	CLEAR MYLAR TAPE 25% OVERLAP
SHIELD	ALUMMYLAR TAPE 25% OVERLAP
JACKET	.032 WALL POLYURETHANE
VOLTAGE	300V
DIAMETER	Ø.240 NOM

- 4 SEE CABLE SPECIFICATION TABLE.
 - 3 SEE CABLE SPECIFICATION TABLE.
 - 2. CABLE MAXIMUM OPERATING TEMPERATURE 250°
 - 1 XX EQUALS CABLE LENGTH IN FEET.
- NOTES: UNLESS OTHERWISE SPECIFIED

ALL PART NUMBER LETTER SUFFIXES ARE TO BE INTERPRETED AS FOLLOWS:
 I.E. - 107-0000-01④
 M - MACHINED ONLY (UNPLATED) G - MATERIAL HAS BEEN GRAINED
 P - PLATED/PAINTED S - MATERIAL HAS BEEN SAWCUT
 H - HEAT TREATED E - ENVIRONMENTAL TEST

EXCEPT AS OTHERWISE NOTED
 ALL DIMENSIONS IN INCHES
 TOLERANCE: .XXX ± z .XX ± z .25
 SURFACE FINISH EXCEPT AS NOTED ✓
 BREAK EDGES TO DEBURR RADIUS OR CHAMFER
 1 THESE DIAS TO T.I.R.
 FILLETS - MAX RAD.

DIYTRAN INSTRUMENTS, INC. CHATSWORTH, CA.

MASTER ONLY IDENTIFIED

SCALE	2/1	REV	DATE	DATE	DATE
DATE	7/2/96	PART NO.	MODEL 6428AXX		
DRAWN	D.Z.	CHECKED			
APPROVED	RA	MATL			
TITLE		NEXT ASSEMBLY		USED ON	
OUTLINE DRAWING				DWG NO.	
MINI 4 PIN, PLUG TO (3) BNC				127-6428A	
SHEET 1 OF 1					