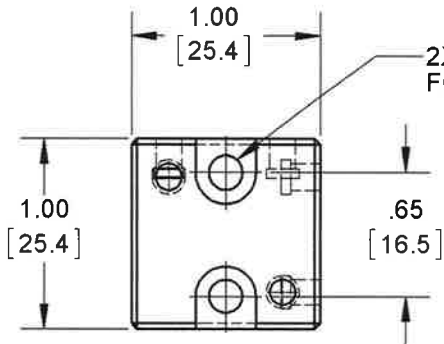


PROPRIETARY AND CONFIDENTIAL

THE INFORMATION CONTAINED IN THIS DRAWING IS THE SOLE PROPERTY OF DYTRAN INSTRUMENTS INC. ANY REPRODUCTION IN PART OR AS A WHOLE WITHOUT THE WRITTEN PERMISSION OF DYTRAN INSTRUMENTS INC. IS PROHIBITED

REVISIONS

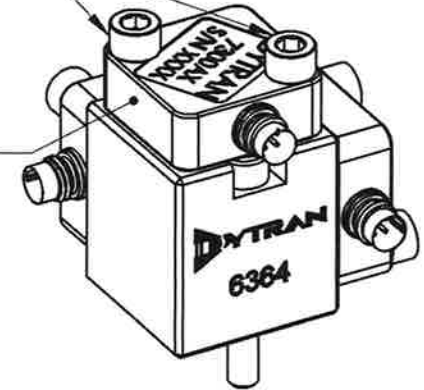
REV	ECN	DESCRIPTION	BY/DATE	CHK	APPR
A	11534	INITIAL RELEASE	LN 12/08/14	<i>LN</i>	<i>LN</i>



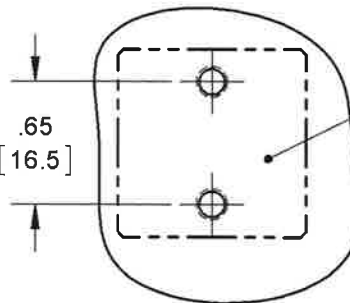
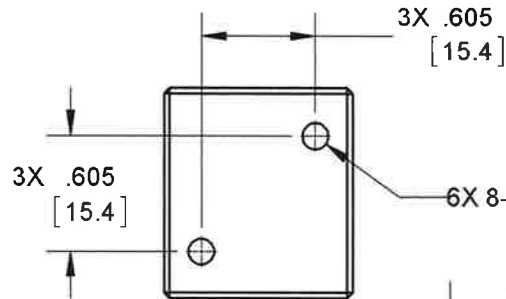
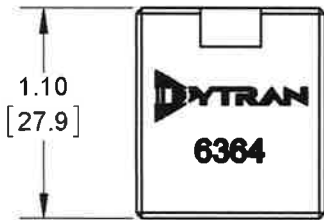
2X CLEARANCE HOLES FOR #8 SCREWS

MOUNTING SCREWS, 8-32 UNC-2A, SUPPLIED WITH ACCELEROMETER, REF

3X MODEL 7300AX, REF



TYPICAL MOUNTING CONFIGURATION



MOUNTING RECOMMENDATIONS

MOUNTING SURFACE PREPARATION:
 SELECT SURFACE FLAT TO .001 TIR
 TAP 2X 8-32 UNC-2B X .375 MIN THD DEPTH
 RECOMMENDED MOUNTING TORQUE: 4-6 LB-IN.

- 4. SUPPLIED MOUNTING SCREWS: 8-32 UNC-2A X 1.25L, QTY. 2
- 3. FOR USE WITH DYTRAN MODELS: 7504AX AND 7300AX
- 2. WEIGHT: 45 GRAMS, MAX.
- 1. MATERIAL: ALUMINUM ALLOY, ANODIZED. COLOR: BLACK.

NOTES: UNLESS OTHERWISE SPECIFIED

UNLESS OTHERWISE SPECIFIED: INTERPRET DIM & TOL PER ASME Y14.5M - 1994. REMOVE BURRS. COUNTERSINK INTERNAL THDS 90° TO MAJOR DIA. CHAM EXT THDS 45° TO MINOR DIA. THD LENGTHS AND DEPTHS ARE FOR MIN FULL THDS. THDS PER MIL-S-7742 DIMENSIONS APPLY AFTER FINISHING.	
USED ON	NEXT ASSY
APPLICATION	
THIRD ANGLE PROJECTION USA	
ALL MACHINED SURFACES TOTAL RUNOUT WITHIN .005. BREAK SHARP EDGES .005 TO .010. MACHINED FILLET RADII .005 TO .015. WELDING SYMBOLS PER AWS A2.4. ABBREVIATIONS PER MIL-STD-12.	

UNLESS OTHERWISE SPECIFIED: DIMENSIONS ARE IN INCHES. DIMENSIONS IN BRACKETS [] ARE IN MILLIMETERS TOLERANCES ARE: INCHES METRIC ANGLES XX ± .03 X ± 0.8 ± 1° .XXX ± 0.10 .XX ± 0.25	
MATERIAL	
FINISH	
DO NOT SCALE DRAWING	

CONTRACT NO.	
APPROVALS	
ORIG	LN
CHK	DATE
APP	DATE
APP	DATE

DYTRAN INSTRUMENTS, INC. MASTER ONLY IN RED Chatsworth, CA

TITLE: **OUTLINE/INSTALLATION DWG, TRIAXIAL MOUNTING BLOCK, MODEL 6364**

SIZE	CAGE CODE	DWG. NO.	REV
A	2W033	127-6364	A
SCALE: NONE		SOLIDWORKS	SHEET 1 OF 1