

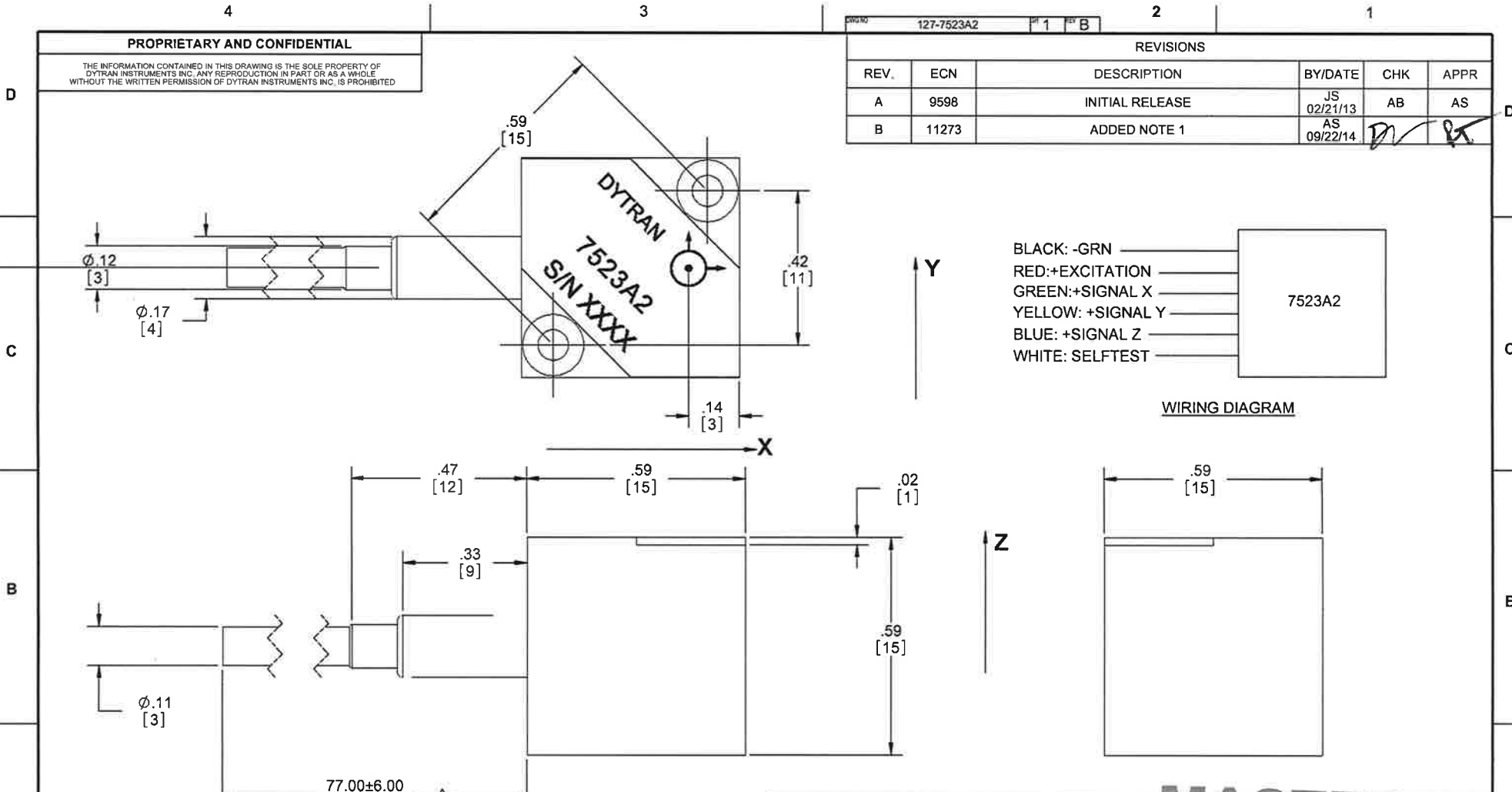
PROPRIETARY AND CONFIDENTIAL

THE INFORMATION CONTAINED IN THIS DRAWING IS THE SOLE PROPERTY OF DYTRAN INSTRUMENTS INC. ANY REPRODUCTION IN PART OR AS A WHOLE WITHOUT THE WRITTEN PERMISSION OF DYTRAN INSTRUMENTS INC. IS PROHIBITED

DWG NO 127-7523A2 P 1 OF B

REVISIONS

REV.	ECN	DESCRIPTION	BY/DATE	CHK	APPR
A	9598	INITIAL RELEASE	JS 02/21/13	AB	AS
B	11273	ADDED NOTE 1	AS 09/22/14	<i>[Signature]</i>	<i>[Signature]</i>



<p>UNLESS OTHERWISE SPECIFIED: INTERPRET DIM & TOL PER ASME Y14.5M - 1994. REMOVE BURRS. COUNTERSINK INTERNAL THDS 90° TO MAJOR DIA. CHAM EXT THDS 45° TO MINOR DIA. THD LENGTHS AND DEPTHS ARE FOR MIN FULL THDS. DIMENSIONS APPLY AFTER FINISHING.</p>	<p>UNLESS OTHERWISE SPECIFIED: DIMENSIONS ARE IN INCHES DIMENSIONS IN BRACKETS [] ARE IN MILLIMETERS UNLESS OTHERWISE SPECIFIED.</p>			<p>MASTER ONLY IN RED OUTLINE/ INSTALLATION DRAWING, 7523A2</p>
	<p>DECIMALS XX ± 03 .XXX ± 010</p>	<p>METRIC X ± 0.8 XX ± 0.25</p>	<p>ANGLES ± 1°</p>	
	<p>APPROVALS</p> <p>ORIG JS CHK <i>[Signature]</i> APP <i>[Signature]</i></p>	<p>DATE</p> <p>02/07/13 10/10/14 11/12/14</p>	<p>SIZE B CAGE CODE 2W033 DWG NO 127-7523A2</p>	
	<p>DO NOT SCALE DRAWING</p>	<p>SCALE: 4:1</p>	<p>SOLIDWORKS</p>	

1 RECOMMENDED MOUNTING TORQUE 6-7 LB-IN

NOTES: UNLESS OTHERWISE SPECIFIED

Model Number 7523A2	PERFORMANCE SPECIFICATION	Doc No PS7523A2
Variable Capacitance Triaxial Accelerometer		REV A, ECN 13334, 03/20/17



- **COST EFFECTIVE**
- **MINIATURE**
- **LOW CURRENT CONSUMPTION**

PHYSICAL

Mass
Mounting
Integral cable
Housing

ENGLISH		SI	
< 0.53	oz	< 15	grams
M2 x 12 flathead		M2 x 12 flathead	
6.56	ft	2	meter
Anodized Aluminum		Anodized Aluminum	

PERFORMANCE

Sensitivity, ±20% [1]
Input Range
Frequency Range, ±3dB
Resonant Frequency
Non-Linearity
Transverse Sensitivity
Output Noise (typical)

280	mV/g	28.5	mV/m/s ²
±5	G	±49.05	m/s ²
0-1500	Hz	0-1500	Hz
5,000	Hz	5,000	Hz
0.3	%	0.3	%
< 2	%	< 2	%
12.5	mGrms	123	mm/s ² rms

ENVIRONMENTAL

Maximum Mechanical Shock
Operating Temperature
Compensated Temperature Range (CTR)
Thermal Zero Drift in CTR
Thermal Sensitivity Drift in CTR
Storage Temperature
Ingress Protection

4,000	g's, Peak	39,240	m/s ² peak
-67 to +257	°F	-55 to +125	°C
-4 to +158	°F	-20 to +70	°C
< ±0.017	%FS/°F	< ±0.03	%FS/°C
< ±0.011	%FS/°F	< ±0.02	%FS/°C
-67 to +302	°F	-55 to +150	°C
IP 65		IP 65	

Electrical

Current Consumption (nominal)
Excitation, regulated
Output Impedance
Output Bias, ±15%
Output Range
Isolation

500	µA	500	µA
4.8 - 5.2	VDC	4.8 - 5.2	VDC
35	kΩ	35	kΩ
2.5	V	2.5	V
±1.4	V	±1.4	V
Case grounded		Case grounded	

This family also includes:

Model	Sensitivity (mV/g)	Input Range (g)	Output Noise (mGrms)	Frequency Range (Hz)
7523A1	550	±2	15.0	0-1500
7523A3	93	±15	37.5	0-1500
7523A5	36	±50	125	0-400

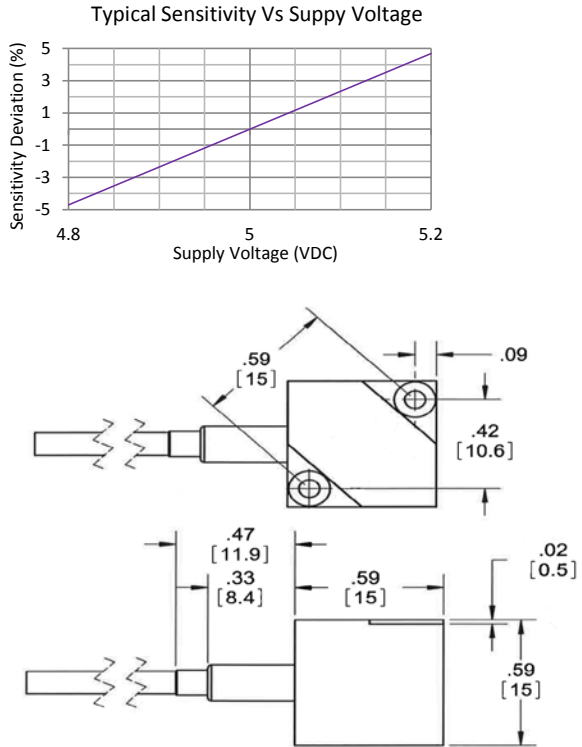
Please, refer to the performance specifications of the products in this family for detailed description

Supplied Accessories:

- 1) Accredited calibration certificate (ISO 17025)
- 2) Mounting Screws, Model 6722, M2 x 12 flathead, qty. 2

Notes:

[1] Measured at 100 Hz, 5 Grms per ISA RP 37.2



Units on the line drawing are in inches, units in brackets are in millimeters. Refer to 127-7523A2 for more information.



21592 Marilla Street, Chatsworth, California 91311 Phone: 818.700.7818 Fax: 818.700.7880 www.dytran.com
For permission to reprint this content, please contact info@dytran.com