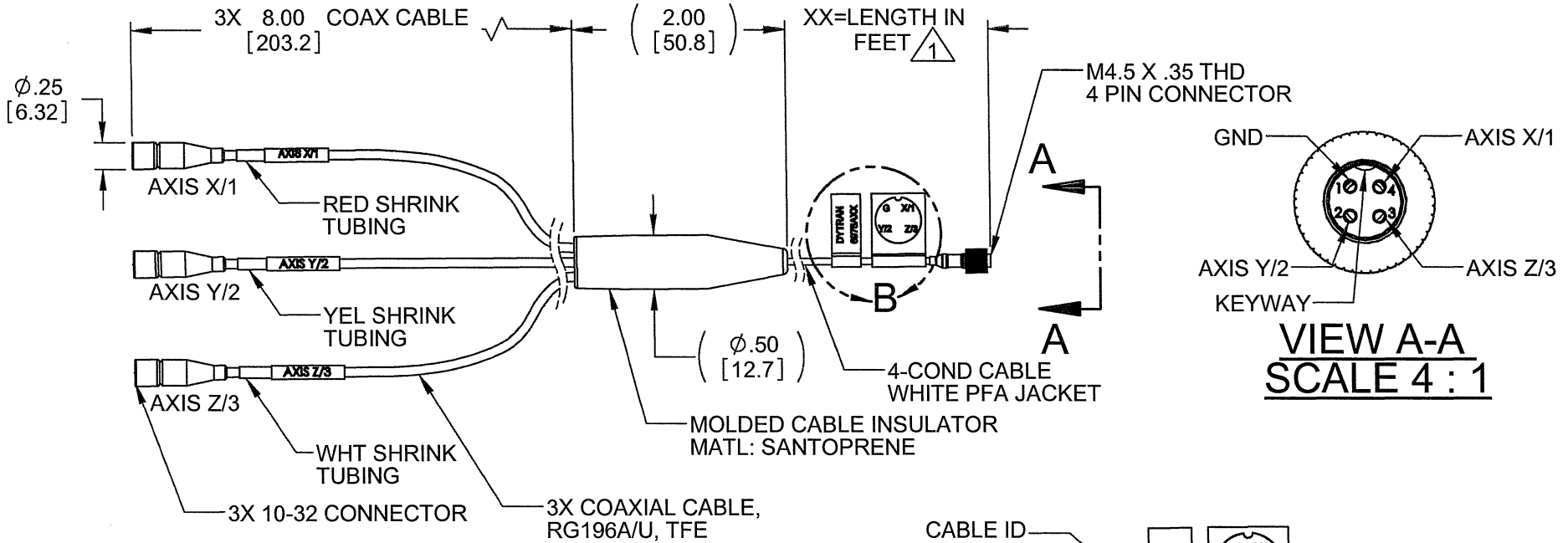


PROPRIETARY AND CONFIDENTIAL

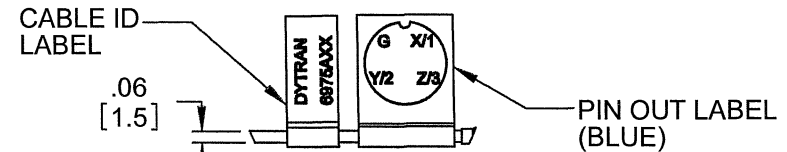
THE INFORMATION CONTAINED IN THIS DRAWING IS THE SOLE PROPERTY OF DYTRAN INSTRUMENTS INC. ANY REPRODUCTION IN PART OR AS A WHOLE WITHOUT THE WRITTEN PERMISSION OF DYTRAN INSTRUMENTS INC. IS PROHIBITED

REVISIONS

REV.	ECN	DESCRIPTION	BY/DATE	CHK	APPR
A	7508	INITIAL RELEASE	JS 05/12/11	<i>JS</i>	<i>AWS</i>



VIEW A-A
SCALE 4 : 1



DETAIL B
SCALE 1 : 1

2. TEMPERATURE RATING: -55°C TO 120°C.

1 PART NUMBER 6975AXX, "XX" DENOTES LENGTH IN FEET.

NOTES: UNLESS OTHERWISE SPECIFIED.

UNLESS OTHERWISE SPECIFIED: INTERPRET DIM & TOL PER ASME Y14.5M - 1994. REMOVE BURRS. COUNTERSINK INTERNAL THDS 90° TO MAJOR DIA. CHAM EXT THDS 45° TO MINOR DIA. THD LENGTHS AND DEPTHS ARE FOR MIN FULL THDS. THDS PER MIL-S-7742. DIMENSIONS APPLY AFTER FINISHING.	UNLESS OTHERWISE SPECIFIED: DIMENSIONS ARE IN INCHES. DIMENSIONS IN BRACKETS [] ARE IN MILLIMETERS TOLERANCES ARE: INCHES METRIC ANGLES .XX ± .03 .X ± 0.8 ± 1° .XXX ± .010 .XX ± 0.25
USED ON	NEXT ASSY
APPLICATION	
THIRD ANGLE PROJECTION USA	
ALL MACHINED SURFACES TOTAL RUNOUT WITHIN .005. BREAK SHARP EDGES .005 TO .010. MACHINED FILLET RADII .005 TO .015. WELDING SYMBOLS PER AWS A2.4. ABBREVIATIONS PER MIL-STD-12.	

CONTRACT NO.		
MATERIAL		
FINISH		
DO NOT SCALE DRAWING		
APPROVALS	DATE	
ORIG	JS	04/26/11
CHK	<i>JS</i>	5/1/11
APP	<i>AWS</i>	5/13/11
APP		

DYTRAN INSTRUMENTS, INC. **MASTER COPY** **ONLY IF IN RED**

TITLE: **OUTLINE/INSTALLATION DRAWING, 6975A**

SIZE	CAGE CODE	DWG. NO.	REV
A	2W033	127-6975A	A
SCALE: NONE		SOLIDWORKS	SHEET 1 OF 1