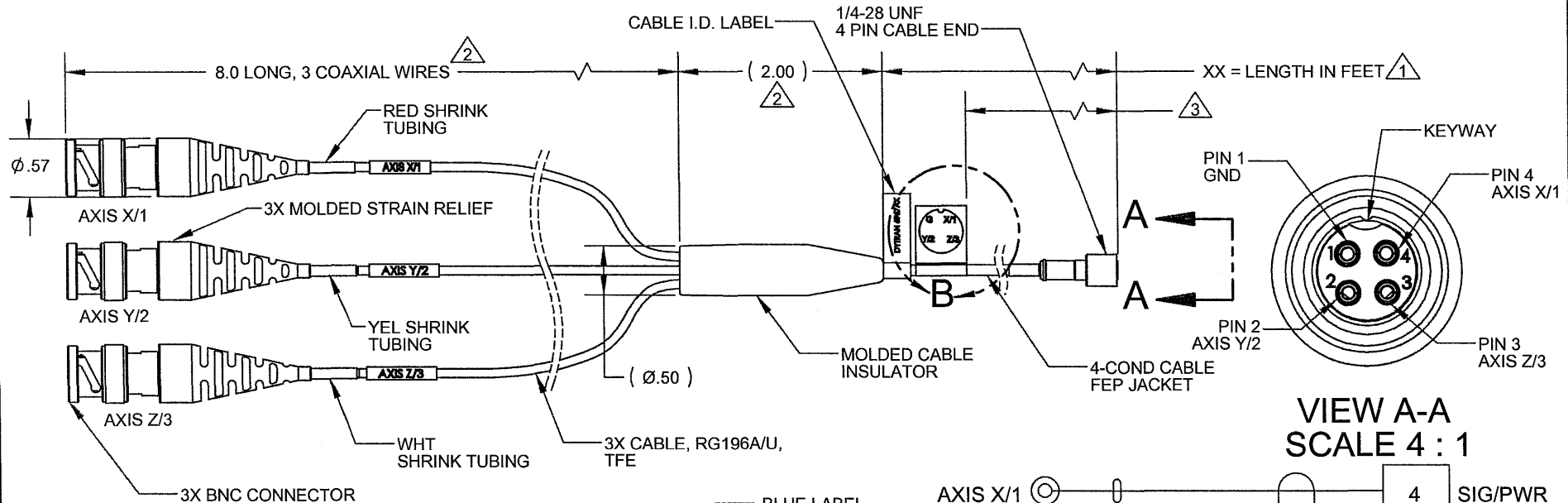


**PROPRIETARY AND CONFIDENTIAL**

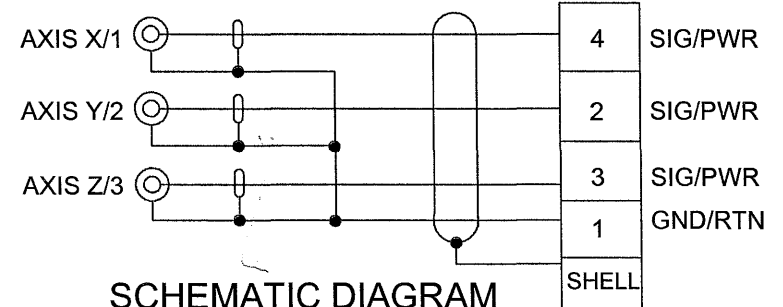
THE INFORMATION CONTAINED IN THIS DRAWING IS THE SOLE PROPERTY OF DYTRAN INSTRUMENTS INC. ANY REPRODUCTION IN PART OR AS A WHOLE WITHOUT THE WRITTEN PERMISSION OF DYTRAN INSTRUMENTS INC. IS PROHIBITED

**REVISIONS**

REV.	ECN	DESCRIPTION	BY/DATE	CHK	APPR
B	8538	REVISED VIEW OF 4 PIN CONECTOR	JS 04/17/12	dn	JS



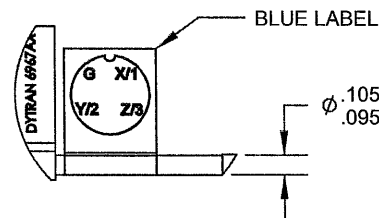
**VIEW A-A  
SCALE 4 : 1**



**SCHEMATIC DIAGRAM**

- 3 OPERATING RANGE: -67°F (-55°C) TO 392°F (200°C).
- 2 OPERATING RANGE: -67°F (-55°C) TO 230°F (110°C).
- 1 XX = WILL VARY IN FEET PER CUSTOMER REQUIREMENTS, FOR EXAMPLE: 6967A10 = 10 FT CABLE LENGTH.

**DETAIL B**



NOTES: UNLESS OTHERWISE SPECIFIED.

USED ON	NEXT ASSY
APPLICATION	
THIRD ANGLE PROJECTION USA	

UNLESS OTHERWISE SPECIFIED:  
 INTERPRET DIM & TOL PER ASME Y14.5M - 1994.  
 REMOVE BURRS.  
 COUNTERSINK INTERNAL THDS 90° TO MAJOR DIA.  
 CHAM EXT THDS 45° TO MINOR DIA.  
 THD LENGTHS AND DEPTHS ARE FOR MIN FULL THDS.  
 THDS PER MIL-S-7742.  
 DIMENSIONS APPLY AFTER FINISHING.  
 ALL MACHINED SURFACES.  
 TOTAL RUNOUT WITHIN .005.  
 BREAK SHARP EDGES .005 TO .010.  
 MACHINED FILLET RADII .005 TO .015.  
 WELDING SYMBOLS PER AWS A2.4.  
 ABBREVIATIONS PER MIL-STD-12.

UNLESS OTHERWISE SPECIFIED:  
 DIMENSIONS ARE IN INCHES.  
 DIMENSIONS IN BRACKETS [ ] ARE IN MILLIMETERS  
 TOLERANCES ARE:  
 INCHES METRIC ANGLES  
 .XX ± .03 .X ± 0.8 ± 1°  
 .XXX ± .010 .XX ± 0.25

CONTRACT NO.		
APPROVALS		DATE
ORIG	JS	04/21/11
CHK	EPEP	05/11/11
APP	ANSANS	05/12/11
DO NOT SCALE DRAWING		

**MASTER ONLY IF IN RED**

Chatsworth, CA

TITLE:  
**OUTLINE/INSTALLATION DRAWING,  
 MINI 4 PIN TO (3) BNC, MODEL 6967A**

SIZE	CAGE CODE	DWG. NO.	REV
<b>A</b>	<b>2W033</b>	<b>127-6967A</b>	<b>B</b>

SCALE: NONE      SOLIDWORKS      SHEET 1 OF 1