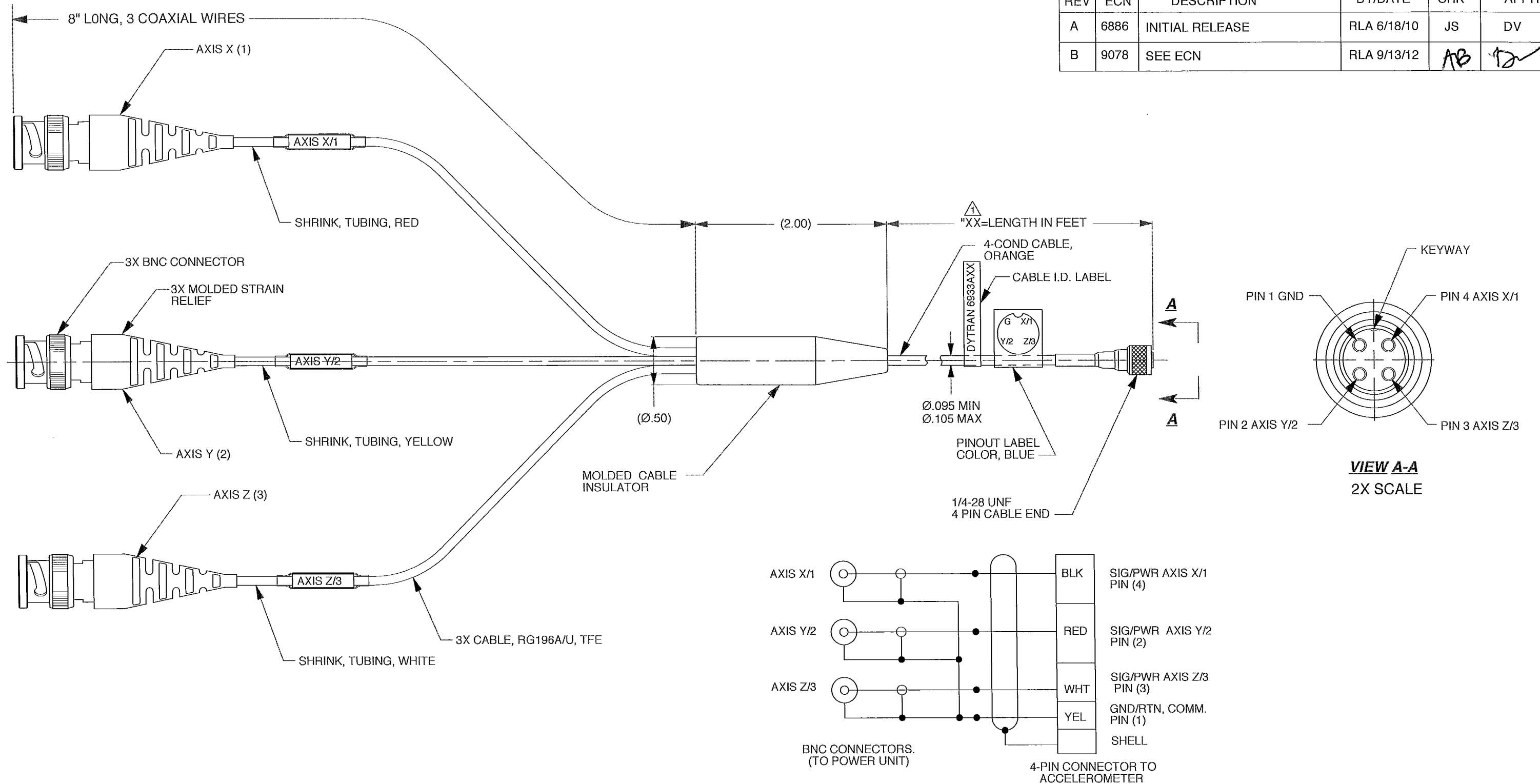


REV	ECN	DESCRIPTION	BY/DATE	CHK	APPR
A	6886	INITIAL RELEASE	RLA 6/18/10	JS	DV
B	9078	SEE ECN	RLA 9/13/12	AB	<i>[Signature]</i>



SCHMATIC DIAGRAM

EXCEPT AS OTHERWISE NOTED

ALL DIMENSIONS IN INCHES
TOLERANCE: .XXX = ± .XX = ± .25

SURFACE FINISH
EXCEPT AS NOTED ✓

BREAK EDGES TO DEBURR
RADIUS OR CHAMFER

△ THESE DIAS ⊙ TO T.I.R.

FILLETS - MAX RAD.

DYTRAN INSTRUMENTS, INC.		MASTER ONLY IF IN RED		CHATSWORTH, CA.	
SCALE 1X	REV -	DATE SEE REV BLK	ECN -		
DATE 6/18/10	PART NO.	MODEL 6933AXX			
DRAWN R.A.	CHECKED J.S.	MAT'L -			
APPROVED D.V.	6/22/10	NEXT ASSEMBLY -	USED ON -		
TITLE OUTLINE/INSTALLATION DRAWING, CABLE ASSEMBLY, MINI 4 PIN, PLUG TO (3) BNC			DWG NO. 127-6933A		
			SHEET 1 OF 1		

2. OPERATING RANGE: -67°F (-55°C) TO 230°F (110°C)

△ XX=WILL VARY IN FEET PER CUSTOMER REQUIREMENTS,
FOR EXAMPLE: 6933A07 = 7 FT CABLE LENGTH