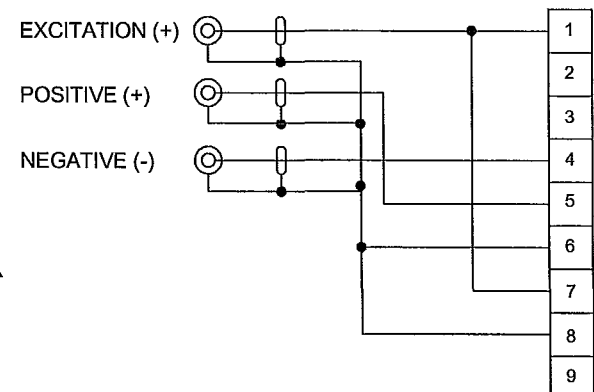
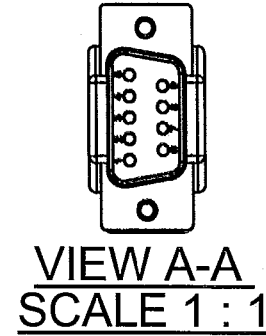
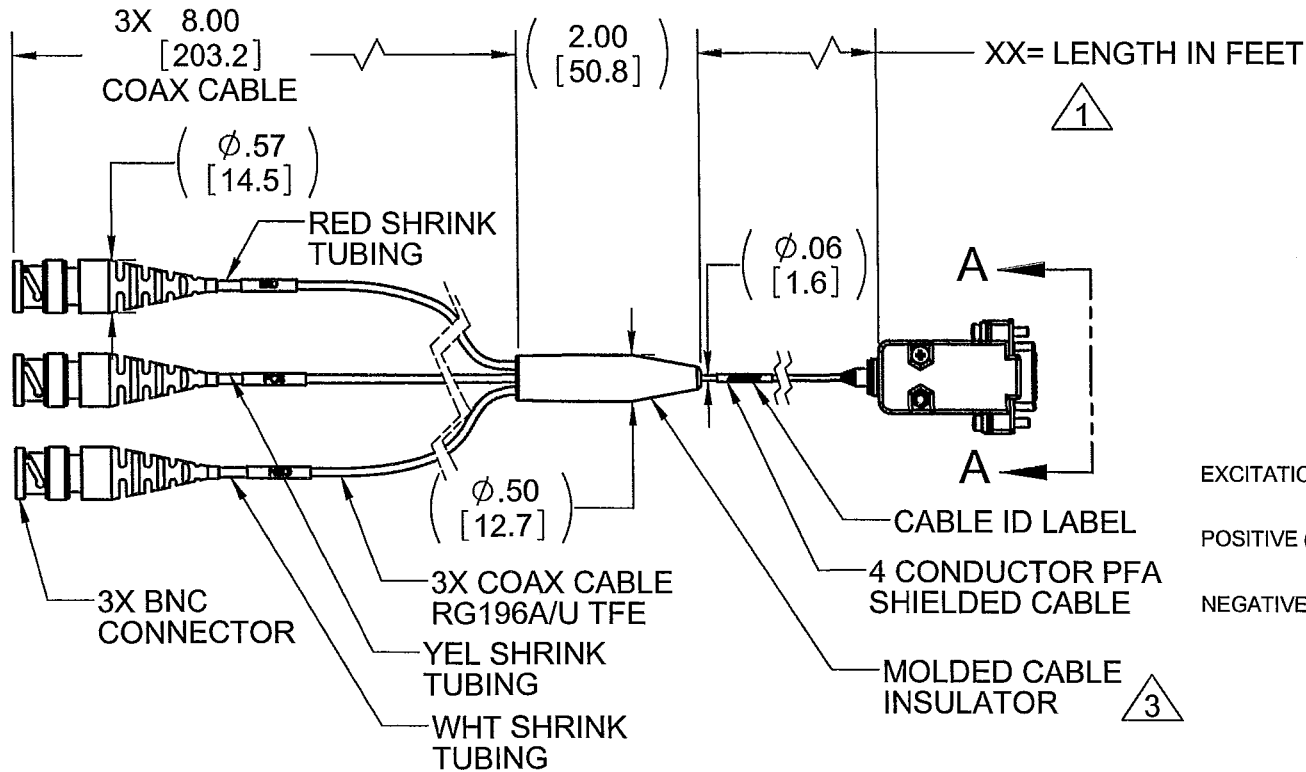


PROPRIETARY AND CONFIDENTIAL

THE INFORMATION CONTAINED IN THIS DRAWING IS THE SOLE PROPERTY OF DYTRAN INSTRUMENTS INC. ANY REPRODUCTION IN PART OR AS A WHOLE WITHOUT THE WRITTEN PERMISSION OF DYTRAN INSTRUMENTS INC. IS PROHIBITED

REVISIONS				
REV	ECN	DESCRIPTION	BY/DATE	CHK APPR
A	8159	INITIAL RELEASE	JS 01/18/12	RA



- 3 MATERIAL: SANTOPRENE
- 2. TEMPERATURE RATING: -55 °C TO 120°C.
- 1 PART NUMBER 6329AXX. "XX" DENOTES LENGTH IN FEET.

NOTES: UNLESS OTHERWISE SPECIFIED

UNLESS OTHERWISE SPECIFIED: INTERPRET DIM & TOL PER ASME Y14.5M - 1994. REMOVE BURRS. COUNTERSINK INTERNAL THDS 90° TO MAJOR DIA. CHAM EXT THDS 45° TO MINOR DIA. THD LENGTHS AND DEPTHS ARE FOR MIN FULL THDS. THDS PER MIL-S-7742. DIMENSIONS APPLY AFTER FINISHING.	UNLESS OTHERWISE SPECIFIED: DIMENSIONS ARE IN INCHES. DIMENSIONS IN BRACKETS [] ARE IN MILLIMETERS TOLERANCES ARE: INCHES METRIC ANGLES .XX ± .03 .X ± 0.8 ± 1° .XXX ± .010 .XX ± 0.25
USED ON	NEXT ASSY
APPLICATION	
THIRD ANGLE PROJECTION USA	
ALL MACHINED SURFACES. 63 TOTAL RUNOUT WITHIN .005. BREAK SHARP EDGES .005 TO .010. MACHINED FILLET RADII .005 TO .015. WELDING SYMBOLS PER AWS A2.4. ABBREVIATIONS PER MIL-STD-12.	

CONTRACT NO.	
APPROVALS	DATE
ORIG JS	12/19/11
CHK RA	1/19/12
APP DV	1/19/12
APP	
DO NOT SCALE DRAWING	

Chatsworth, CA

MASTER

ONLY IF IN RED

TITLE: **OUTLINE/INSTALLATION DRAWING CABLE ASSY, (3) BNC TO DB-9, MODEL 6329A**

SIZE A	CAGE CODE 2W033	DWG. NO. 127-6329A	REV A
SCALE: 1:4	SOLIDWORKS	SHEET 1 OF 1	