

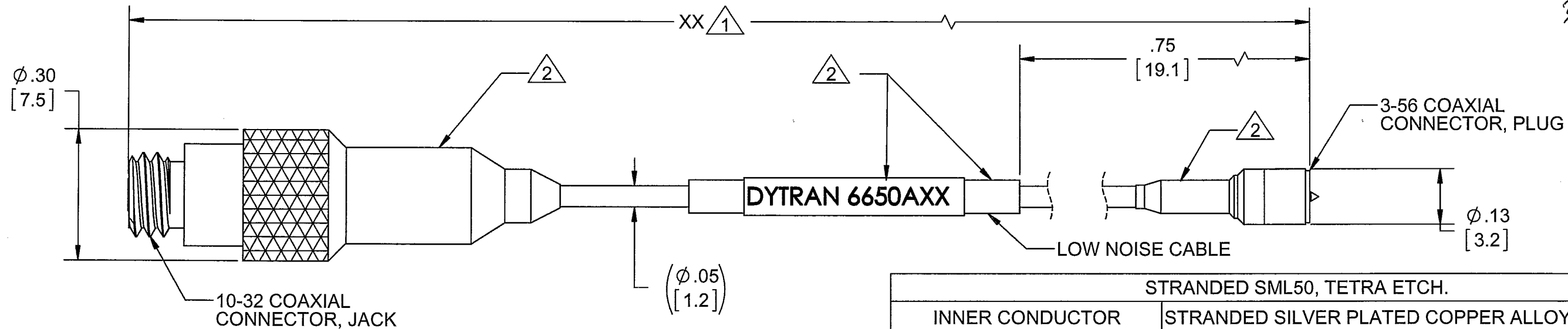
PROPRIETARY AND CONFIDENTIAL

THE INFORMATION CONTAINED IN THIS DRAWING IS THE SOLE PROPERTY OF DYTRAN INSTRUMENTS INC. ANY REPRODUCTION IN PART OR AS A WHOLE WITHOUT THE WRITTEN PERMISSION OF DYTRAN INSTRUMENTS INC. IS PROHIBITED

REVISIONS

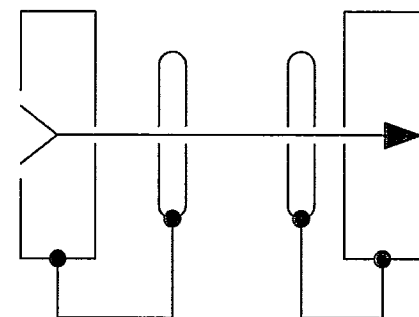
| REV. | ECN  | DESCRIPTION     | BY/DATE      | CHK | APPR        |
|------|------|-----------------|--------------|-----|-------------|
| A    | 9747 | INITIAL RELEASE | RA, 03/20/13 | EM  | [Signature] |

3/21/13



| MODEL   | REV | ECN  | DATE     | LENGTH | WEIGHT OZ/GRAMS   |
|---------|-----|------|----------|--------|-------------------|
| 6650A03 | A   | 9747 | 03/20/13 | 3 FT   | .18 OZ/ 5.2 GRAMS |

| 1 CABLE LENGTH TOLERANCE |            |
|--------------------------|------------|
| ≤1 FT                    | +1/ -0 IN  |
| >1 FT - 5 FT             | +2/ -0 IN  |
| > 5 FT - 10 FT           | +4/ -0 IN  |
| >10 FT - 25 FT           | +6 / -0 IN |
| >25 FT                   | +5% / -0%  |



**SCHMATIC DIAGRAM**

| STRANDED SML50, TETRA ETCH. |   |
|-----------------------------|---|
| INNER CONDUCTOR             | STRANDED SILVER PLATED COPPER ALLOY.  |
| CONSTRUCTION                | AWG34 OR 7 X 0.063mm [.002in] NOM.  |
| DIAMETER                    | 0.189mm [.007in] NOM  |
| SECTION                     | 0.022mm <sup>2</sup> [.0009 in] NOM   |
| RESISTANCE                  | 98 OHMS/100M NOM @20°C [68°F]   |
| DIELECTRIC                  | EXTRUDED PTFE DIELECTRIC WITH GRAPHITE LAYER. DIAMETER: 0.52mm [.02 in] NOM                     |
| OUTER CONDUCTOR             | SILVER PLATED COPPER BRAIDED SHIELD. STRAND DIAMETER: 0.063mm [.002 in] NOM. COVERAGE: 90% NOM. |
| JACKET                      | OUTER WRAPPED AND SINTERED PTFE   |
| COLOR                       | ORANGE  |
| COATING                     | TETRA ETCH  |
| COAXIAL DIAMETER            | 1.22mm±0.10mm [.048 ±.004]  |
| APPROX WEIGHT               | 3.60G/M [.042 OZ/FT]  |
| TEMPERATURE RATING          | -90°C TO +200°C [-130°F TO +392°]   |
| IMPEDANCE                   | 50 OHMS NOM   |
| CAPACITANCE                 | 97 pF/m NOM.  |

UNLESS OTHERWISE SPECIFIED:  
 INTERPRET DIM & TOL PER ASME Y14.5M - 1994.  
 REMOVE BURRS.  
 COUNTERSINK INTERNAL THDS 90° TO MAJOR DIA.  
 CHAM EXT THDS 45° TO MINOR DIA. THD LENGTHS AND DEPTHS ARE FOR MIN FULL THDS.  
 DIMENSIONS APPLY AFTER FINISHING.

ALL MACHINED SURFACES. TOTAL RUNOUT WITHIN .005. BREAK SHARP EDGES .005 TO .010. MACHINED FILLET RADII .005 TO .015. WELDING SYMBOLS PER AWS A2.4. ABBREVIATIONS PER MIL-STD-12.

UNLESS OTHERWISE SPECIFIED: DIMENSIONS ARE IN INCHES. DIMENSIONS IN BRACKETS [ ] ARE IN MILLIMETERS TOLERANCES ARE:  
 DECIMALS METRIC  
 .XX ±.03 .X ± 0.8  
 .XXX ±.010 .XX ±0.25  
 ANGLES ±1°

| APPROVALS            |             | DATE                       |
|----------------------|-------------|----------------------------|
| ORIG                 | RA          | 03/20/13                   |
| CHK                  | EM          |                            |
| APP                  | [Signature] | 3/22/13                    |
| DO NOT SCALE DRAWING |             | THIRD ANGLE PROJECTION USA |

**DYTRAN INSTRUMENTS, INC.** **MASTER COPY** **ONLY IN RED**

|   |                        |                         |
|---|------------------------|-------------------------|
| TITLE: <b>OUTLINE/INSTALLATION DRAWING, 6650AXX</b> |                        |                         |
| SIZE <b>B</b>                                       | CAGE CODE <b>2W033</b> | DWG NO <b>127-6650A</b> |
| SCALE: <b>2:1</b>                                   | REV <b>A</b>           |                         |
| SHEET 1 OF 1  |                        |                         |

2 LOW OUT-GASSING

1 PART NUMBER 6650AXX, XX DENOTES LENGTH IN FEET.

NOTES: UNLESS OTHERWISE SPECIFIED