

D

C

B

A

PROPRIETARY AND CONFIDENTIAL

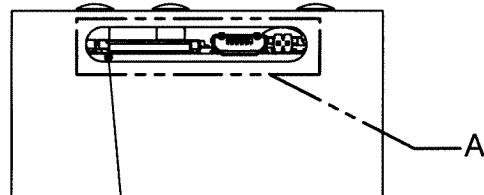
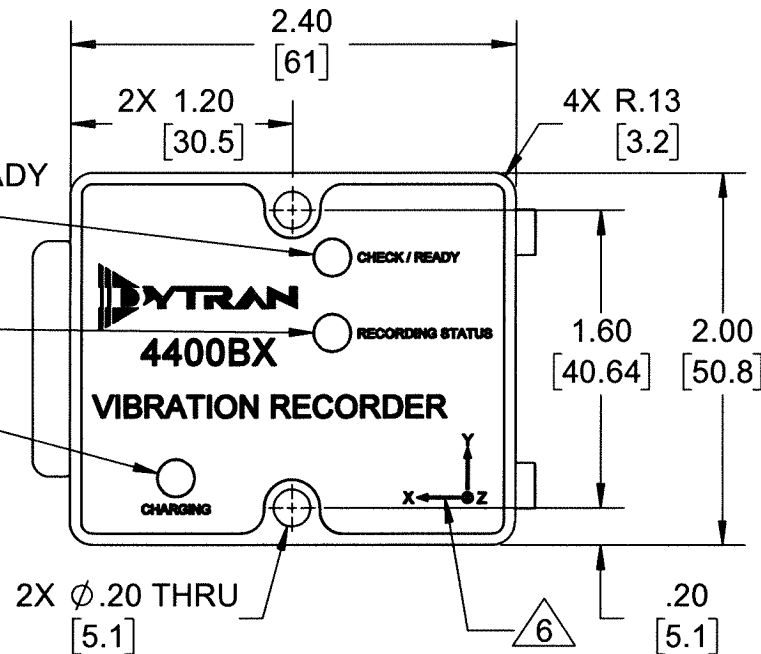
THE INFORMATION CONTAINED IN THIS DRAWING IS THE SOLE PROPERTY OF DYTRAN INSTRUMENTS INC. ANY REPRODUCTION IN PART OR AS A WHOLE WITHOUT THE WRITTEN PERMISSION OF DYTRAN INSTRUMENTS INC. IS PROHIBITED

MODEL	RANGE
4400B1	±2g
4400B2	±19g
4400B3	±200g

HARDWARE CHECK / READY  
INDICATOR LED

RECORDING  
INDICATOR LED

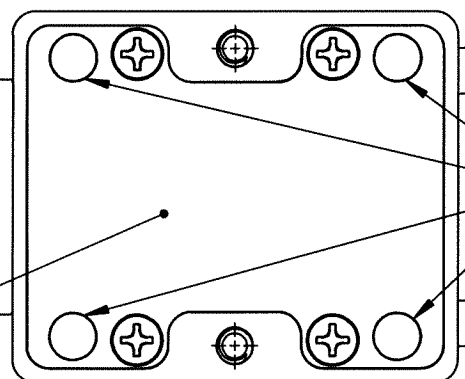
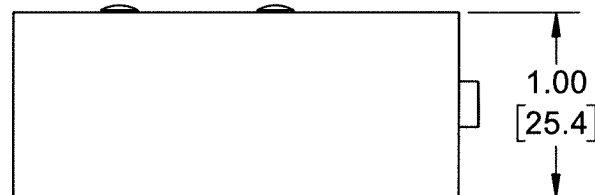
CHARGING  
INDICATOR LED



MOLDED COVER  
NOT SHOWN FOR  
CLARITY

MOLDED COVER

8 BOTTOM COVER,  
REMOVABLE



RARE EARTH MAGNETS,  
PERMANENTLY INSTALLED

POWER  
BUTTON

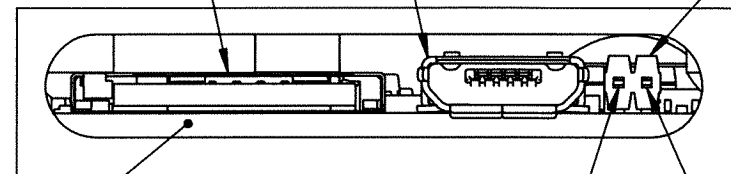
RECORD  
BUTTON

RECORD  
BUTTON

BATTERY CHARGING  
PORT, MICRO-USB

MICRO-SD  
CARD SLOT

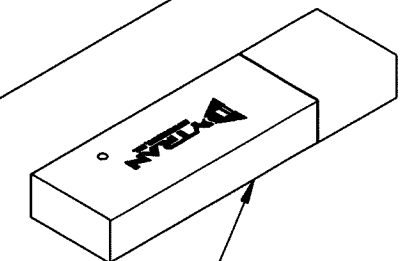
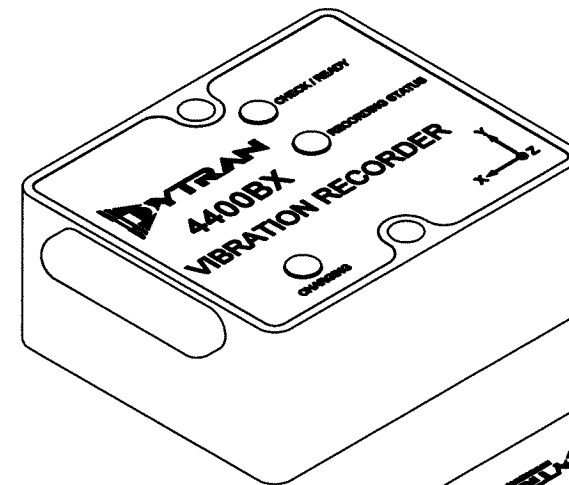
7 SYNCHRONIZATION  
CONNECTOR



(+) (-)

8 MOLDED COVER  
NOT SHOWN FOR CLARITY

DETAIL A  
SCALE 3 : 1



9007 SOFTWARE,  
SUPPLIED

- 8 MOLDED COVER AND BOTTOM COVER MUST BE INSTALLED TO MEET IP RATING.
- 7 MATING SYNCHRONIZATION CABLE: DYTRAN MODEL 60153AXX.
- 6 ARROWS INDICATE DIRECTIONS OF ACCELERATION FOR POSITIVE OUTPUT.
- 5 MAGNETS PULL RATING: UP TO 8.4 lb.  
NOTE: MAXIMUM PULL RATINGS ARE BASED ON DIRECT CONTACT WITH RUST-FREE AND UNPAINTED IRON PLATE. VARIATIONS IN MATERIAL CONDITION WILL SIGNIFICANTLY REDUCE THESE RATINGS.
- 4 MOUNTING SCREW, MODEL 6246, 10-32 UNF-3A X 1.25, QTY 2, SUPPLIED.  
MOUNTING SCREW, MODEL 6694A1, M5 X 0.8 X 35mm, QTY 2, SUPPLIED.
3. OPERATING TEMPERATURE, DISCHARGING: -4°F TO +140°F (-20°C TO +60°C)  
OPERATING TEMPERATURE, CHARGING: +32°F TO +113°F (0°C TO +45°C)
2. HOUSING MATERIAL: ALUMINUM ALLOY, ANODIZED, COLOR: BLUE.
1. WEIGHT: 150 GRAMS, MAX.

NOTES: UNLESS OTHERWISE SPECIFIED

DWG NO 127-4400B SH 1 REV A

REVISIONS

REV.	ECN	DESCRIPTION	BY/DATE	CHK	APPR
A	15327	INITIAL RELEASE	KG 02/17/20	AM	

UNLESS OTHERWISE SPECIFIED:  
INTERPRET DIM & TOL PER  
ASME Y14.5M - 1994.  
REMOVE BURRS.  
COUNTERSINK INTERNAL THDS  
90° TO MAJOR DIA.  
CHAM EXT THDS 45° TO MINOR DIA.  
THD LENGTHS AND DEPTHS ARE FOR  
MIN FULL THDS.  
DIMENSIONS APPLY AFTER FINISHING.

ALL MACHINED SURFACES:  
TOTAL RUNOUT WITHIN .005.  
BREAK SHARP EDGES .005 TO .010.  
MACHINED FILLET RADII .005 TO .015.  
WELDING SYMBOLS PER AWS A2.4.  
ABBREVIATIONS PER MIL-STD-12.

UNLESS OTHERWISE SPECIFIED:  
DIMENSIONS ARE IN INCHES.  
DIMENSIONS IN BRACKETS [ ] ARE IN  
MILLIMETERS TOLERANCES ARE:

DECIMALS METRIC ANGLES  
.XX ± .03 .X ± 0.8 ± 1°  
.XXX ± 0.10 .XX ± 0.25

APPROVALS		DATE
ORIG	KG	10/18/19
CHK	AM	03/12/20
APP		5/12/20

DO NOT SCALE DRAWING

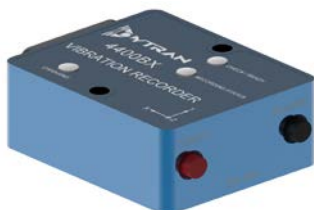
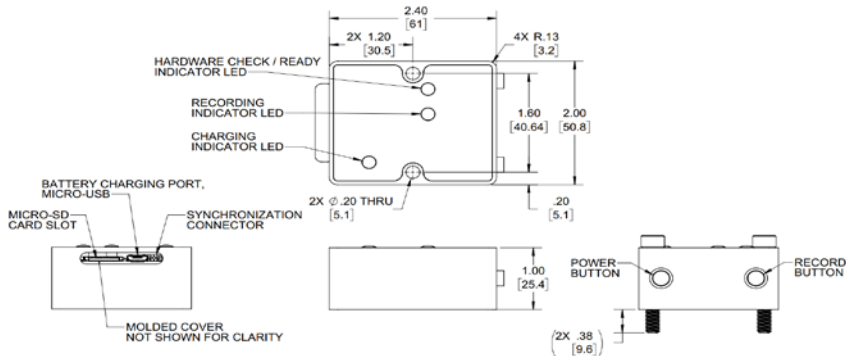



Chatsworth, CA

MASTER  
ONLY IF IN RED

TITLE: OUTLINE/INSTALLATION DWG, VIBRATION RECORDER, MODEL 4400B			
SIZE B	CAGE CODE 2W033	DWG NO 127-4400B	REV A

SCALE: 1:1 SHEET 1 OF 1

MODEL NUMBER 4400B1		PERFORMANCE SPECIFICATIONS				DOC NO. PS4400B1			
		ACCELERATION RECORDER, TRIAXIAL				REV A, ECN 15327, 02/24/20			
	<ul style="list-style-type: none"><li>RECORDS THREE-AXIS VIBRATION UP TO 15 HOURS</li><li>IP64 RATED</li><li>MICRO-SDHC CARD COMPATIBLE</li><li>DUAL MOUNTING CONFIGURATIONS</li><li>INTEGRATED ANTI-ALIASING FILTERS</li></ul>			Model	Range (Gpeak)	Noise (G rms)	Oper. Temp (°F)	BandWidth (Hz)	
				4400B2	±19	0.02	-4 to +140	0 to 1000	
				4400B3	±200	0.2	-4 to +140	0 to 1000	
				Refer to the performance specifications of the products in this family for detailed description					
		<b>Supplied Accessories:</b> 1) Accredited calibration certificate (ISO 17025) 2) Mounting Screw, Model 6246, 10-32 X 1.25, Qty. 2 3) Mounting Screw, Model 6694A1, M5x0.8 X 35mm, Qty. 2 4) 9007 Software							
		<b>Notes:</b> [1] Linearity is % of specified full scale (or any less full-scale range), zero-based best fit straight line method. [2] In the interest of constant product improvement, we reserve the rights to change the specifications without notice. It is the customer's responsibility to validate that a particular product with the properties described in the product specification is suitable for use in a particular application. Parameters provided in datasheets and / or specifications may vary in different applications and performance may vary overtime. All operating parameters, including typical parameters, must be validated for each customer application by the customer's technical experts. [3] Molded cover and bottom cover with integral sealing gasket must both be installed to meet IP64 rating.							
<b>PHYSICAL</b> Weight, Max. Mounting Housing  Material	ENGLISH		SI						
	5.3	oz	150	grams					
	Screws / Magnets		Screws / Magnets						
	Aluminum, Anodized		Aluminum, Anodized						
<b>PERFORMANCE</b> Acceleration Range Maximum Frequency Range, -3dB Resonance Frequency Linearity [1] Transverse Sensitivity, Max Noise, Max. Recording Time, Max. Sampling rate Memory Card Type Acquisition Type	±2	Gpeak	±20	m/s <sup>2</sup> peak					
	0 to 1000	Hz	0 to 1000	Hz					
	>5.5	kHz	>5.5	kHz					
	< ±2.0	%F.S.	< ±2.0	%F.S.					
	5	%	5	%					
	0.01	G rms	88	mm/s <sup>2</sup> rms					
	15	hours	15	hours					
	100 - 10,000	samples/s	100 - 10,000	samples/s					
	Micro-SDHC		Micro-SDHC						
	Free Run / Triggered / Time		Free Run / Triggered / Time						
	<b>ELECTRICAL</b> Battery	1300mAh (Rechargeable)		1300mAh (Rechargeable)					
<b>ENVIRONMENTAL</b> Shock Max Vibration Max Operating Temperature, Discharging Operating Temperature, Charging Seal [3]	1,000	g pk	9810	m/s <sup>2</sup>					
	100	g pk	981	m/s <sup>2</sup>					
	-4 to +140	°F	-20 to +60	°C					
	+32 to +113	°F	0 to +45	°C					
	Environmental / IP64		Environmental / IP64						
									
Units on the line drawing are in inches, units in brackets are in millimeters. Refer to 127-4400B for more information.									
<div></div> <div>21592 Marilla Street, Chatsworth, California 91311 Phone: 818.700.7818 Fax:818.700.7880 <a href="http://www.dytran.com">www.dytran.com</a> For permission to reprint this content, please contact <a href="mailto:info@dytran.com">info@dytran.com</a></div>									