

PROPRIETARY AND CONFIDENTIAL

THE INFORMATION CONTAINED IN THIS DRAWING IS THE SOLE PROPERTY OF
DYTRAN INSTRUMENTS INC. ANY REPRODUCTION IN PART OR AS A WHOLE
WITHOUT THE WRITTEN PERMISSION OF DYTRAN INSTRUMENTS INC. IS PROHIBITED

DWG NO 127-3623A4T-XX

SH 1

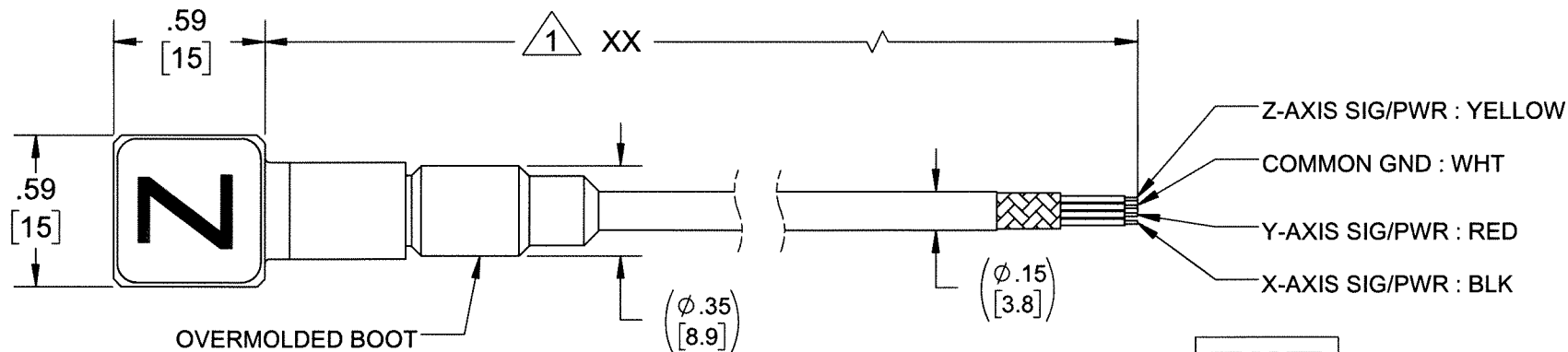
REV A

REVISIONS

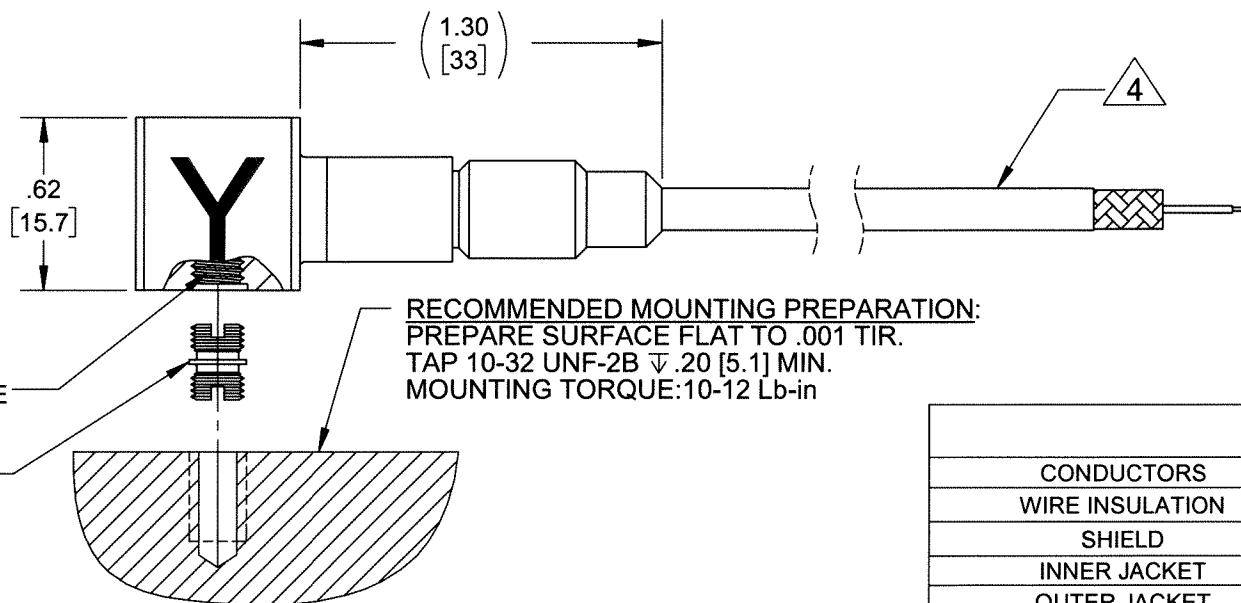
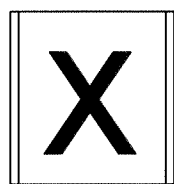
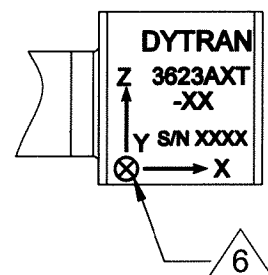
REV.	ECN	DESCRIPTION	BY/DATE	CHK	APPR
A	14970	INITIAL RELEASE	KG 09/17/19	AM	W

1 CABLE LENGTH TOLERANCE	
≤1FT	+1/-0 IN
>1 FT - 5 FT	+2/-0 IN
> 5 FT - 10 FT	+4/-0 IN
>10 FT - 25FT	+6 / -0 IN
>25 FT	+5% / -0%

MODEL NO	SENSITIVITY
3623A4T-XX	10 mV/g
3623A5T-XX	50 mV/g
3623A6T-XX	100 mV/g



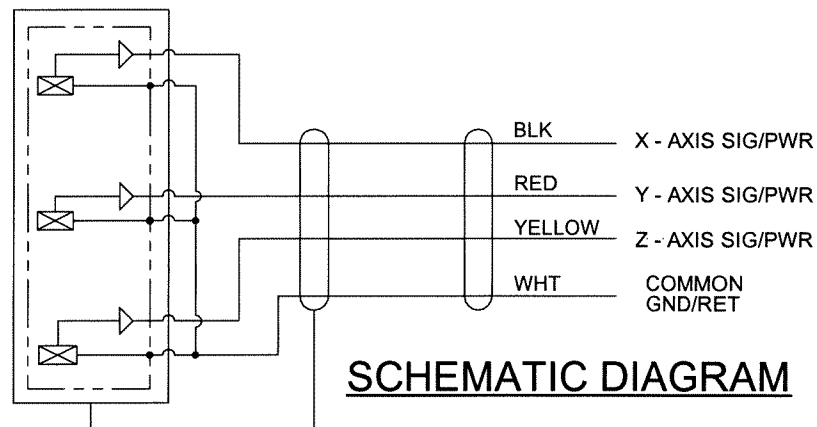
OVERMOLDED BOOT



RECOMMENDED MOUNTING PREPARATION:
PREPARE SURFACE FLAT TO .001 TIR.
TAP 10-32 UNF-2B ∇ .20 [5.1] MIN.
MOUNTING TORQUE: 10-12 Lb-in

10-32 UNF-2B
TAPPED HOLE

5



SCHEMATIC DIAGRAM

7. RATING: IP68, SUBMERSED TO 100 PSI.

6 ARROWS INDICATE DIRECTION OF ACCELERATION FOR POSITIVE OUTPUT

5 MOUNTING STUD, 10-32 TO 10-32, MODEL 6200, SUPPLIED.

4 CABLE, 4 CONDUCTOR, POLYURETHANE. SEE TABLE FOR SPECIFICATIONS.

3. WEIGHT: 18 GRAMS, MAX. (LESS CABLE).

2. TEMPERATURE RATING: -55°C TO +100°C.

1 PART NUMBER 3623AXT-XX. ("XX" DENOTES LENGTH IN FEET).

NOTES: UNLESS OTHERWISE SPECIFIED

4 4 CONDUCTOR, SHIELDED CABLE	
CONDUCTORS	28 AWG- 7/36 SILVER PLATED COPPER
WIRE INSULATION	PFA, .008 NOMINAL WALL
SHIELD	36 AWG SILVER PLATED COPPER BRAID, 90% COVERAGE, NOM
INNER JACKET	WHITE, TEFLON
OUTER JACKET	ORANGE, POLYURETHANE, ϕ .150 IN. [3.81mm] NOM.
TEMPERATURE RATING	-55°C TO +100°C
WEIGHT IN AIR	12 LB. / 1000 FT.
PRESSURE RATING	200 PSI [1.38 MPa] MAX.
VOLTAGE	600 VOLTS
MINIMUM BEND DIAMETER	6 IN. [152.4mm]

UNLESS OTHERWISE SPECIFIED:
INTERPRET DIM & TOL PER
ASME Y14.5M - 1994.
REMOVE BURRS.
COUNTERSINK INTERNAL THDS
90° TO MAJOR DIA.
CHAM EXT THDS 45° TO MINOR DIA.
THD LENGTHS AND DEPTHS ARE FOR
MIN FULL THDS.
DIMENSIONS APPLY AFTER FINISHING.

ALL MACHINED SURFACES: \checkmark
TOTAL RUNOUT WITHIN .005.
BREAK SHARP EDGES .005 TO .010.
MACHINED FILLET RADII .005 TO .015.
WELDING SYMBOLS PER AWS A2.4.
ABBREVIATIONS PER MIL-STD-12.

UNLESS OTHERWISE SPECIFIED:
DIMENSIONS ARE IN INCHES
DIMENSIONS IN BRACKETS [] ARE IN
MILLIMETERS TOLERANCES ARE:

DECIMALS	METRIC	ANGLES
XX ± .03	X ± 0.8	± 1°
.XXX ± .010	.XX ± 0.25	

APPROVALS		DATE
ORIG	NDC	03/28/19
CHK	AM	09/17/19
APP	W	11/17/19

DO NOT SCALE DRAWING

THIRD ANGLE PROJECTION
USA



Chatsworth, CA
MASTER ONLY IF IN RED

TITLE:
OUTLINE/INSTALLATION DRAWING,
3623A4T-XX SERIES

SIZE B	CAGE CODE 2W033	DWG NO 127-3623A4T-XX	REV A
-----------	--------------------	--------------------------	----------

SCALE: 3:2

SHEET 1 OF 1

