

**PROPRIETARY AND CONFIDENTIAL**

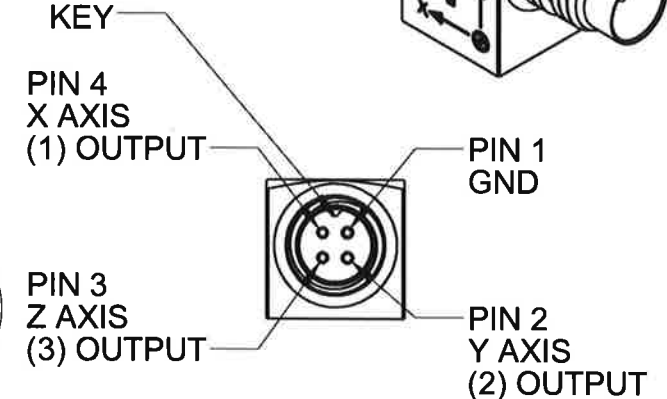
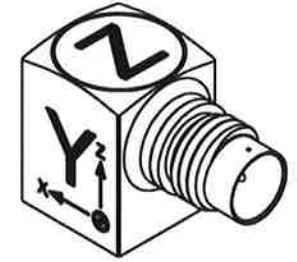
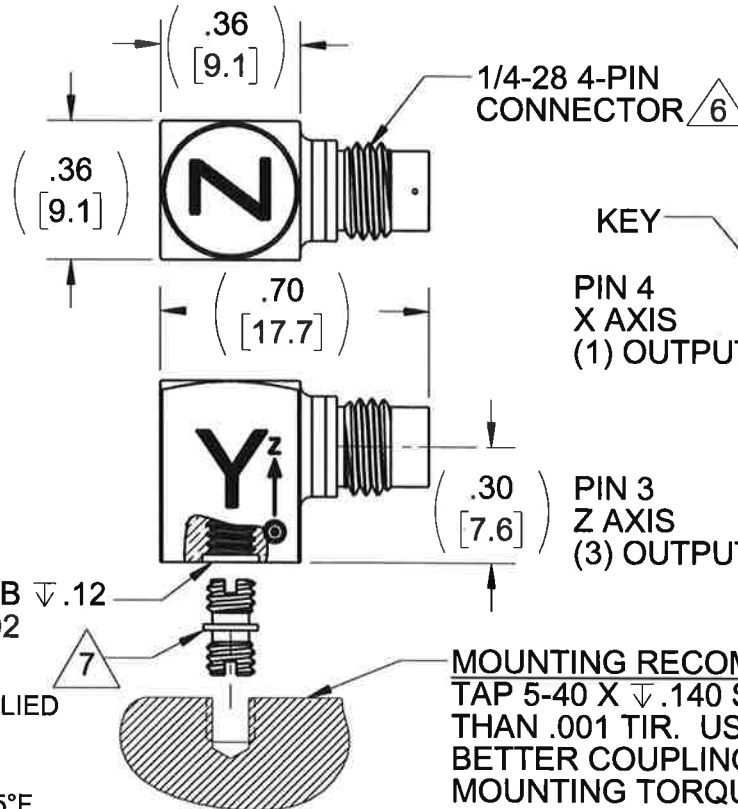
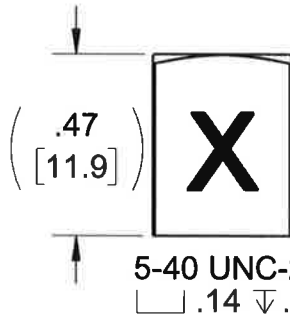
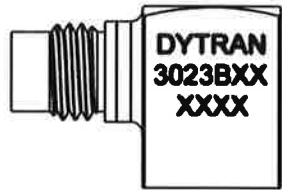
THE INFORMATION CONTAINED IN THIS DRAWING IS THE SOLE PROPERTY OF DYTRAN INSTRUMENTS INC. ANY REPRODUCTION IN PART OR AS A WHOLE WITHOUT THE WRITTEN PERMISSION OF DYTRAN INSTRUMENTS INC. IS PROHIBITED

**REVISIONS**

REV	ECN	DESCRIPTION	BY/DATE	CHK	APPR
A	13036	INITIAL RELEASE	JS 10/14/16	LA	LW

**VARIATION TABLE**

MODEL NO.	SENSITIVITY	TEDS
3023B4	1mV/g	NO
3023B5	5mV/g	NO
3023B6	10mV/g	NO
3023B4T	1mV/g	YES
3023B5T	5mV/g	YES
3023B6T	10mV/g	YES



- 7 MODEL 6580, 5-40 UNC-2A MOUNTING STUD, SUPPLIED
- 6 MATES WITH DYTRAN 6811AXX OR 6824AXX CABLE (XX=LENGTH IN FEET)
- 5. OPERATIONAL TEMPERATURE: RANGE -60° TO +325°F
- 4. SENSITIVITY: SEE CHART.
- 3. WEIGHT: 3 GRAMS MAX.
- 2. ARROWS INDICATE ACCELERATION DIRECTION FOR POSITIVE OUTPUT
- 1. MATERIAL: TITANIUM ALLOY

**MOUNTING RECOMMENDATIONS:**  
 TAP 5-40 X .140 SURFACE FLATNESS BETTER THAN .001 TIR. USE SILICONE GREASE FOR BETTER COUPLING.  
 MOUNTING TORQUE: 6-8 LB-IN.

NOTES: UNLESS OTHERWISE SPECIFIED.

3023B4	
3023B5	
3023B6	
3023B4T	
3023B5T	
3023B6T	
USED ON	NEXT ASSY
APPLICATION	
THIRD ANGLE PROJECTION USA	

UNLESS OTHERWISE SPECIFIED:  
 INTERPRET DIM & TOL PER ASME Y14.5M - 1994.  
 REMOVE BURRS.  
 COUNTERSINK INTERNAL THDS 90° TO MAJOR DIA.  
 CHAM EXT THDS 45° TO MINOR DIA.  
 THD LENGTHS AND DEPTHS ARE FOR MIN FULL THDS.  
 THDS PER MIL-S-7742.  
 DIMENSIONS APPLY AFTER FINISHING.

63  
 ALL MACHINED SURFACES:  
 TOTAL RUNOUT WITHIN .005.  
 BREAK SHARP EDGES .005 TO .010.  
 MACHINED FILLET RADII .005 TO .015.  
 WELDING SYMBOLS PER AWS A2.4.  
 ABBREVIATIONS PER MIL-STD-12.

UNLESS OTHERWISE SPECIFIED:  
 DIMENSIONS ARE IN INCHES.  
 DIMENSIONS IN BRACKETS [ ] ARE IN MILLIMETERS  
 TOLERANCES ARE:  
 INCHES METRIC ANGLES  
 .XX ± .03 .X ± 0.8 ± 1°  
 .XXX ± .010 .XX ± 0.25

MATERIAL

FINISH

DO NOT SCALE DRAWING

CONTRACT NO.	
APPROVALS	DATE
ORIG	NDC 03/11/14
CHK	LA 4/4/16
APP	LW 11/10/16
APP	

**MASTER**  
**DYTRAN**  
 INSTRUMENTS, INC. Chatsworth, CA

TITLE:  
**OUTLINE/INSTALLATION DRAWING,  
 MODEL 3023B SERIES**

SIZE	CAGE CODE	DWG. NO.	REV
<b>A</b>	<b>2W033</b>	<b>127-3023B4</b>	<b>B</b>

SCALE: NONE      SOLIDWORKS      SHEET 1 OF 1

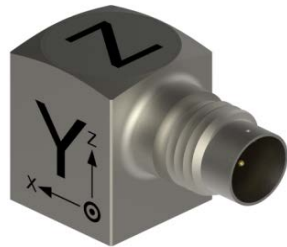
MODEL NUMBER  
**3023B6T**

**PERFORMANCE SPECIFICATION**

DOC NO.  
**PS3023B6T**

ACCELEROMETER, TRIAXIAL, IEPE

REV D, ECN 17104, 03/29/23



- HIGH TEMPERATURE
- HERMETICALLY SEALED
- MINIATURE SIZE
- TEDS FEATURE

**PHYSICAL**

Weight, Max.  
Mounting  
Connector [1]  
Material, Housing / Connector

ENGLISH		SI	
0.14	oz	4.0	grams
5-40 Tapped Hole		5-40 Tapped Hole	
4-pin		4-pin	
Titanium		Titanium	

**PERFORMANCE**

Sensitivity, -10% / +15% [5]  
Range F.S. (each axis)  
Frequency Response, ±5%  
                                  ±15%  
Element Natural Frequency  
Equivalent Electrical Noise  
Spectral Noise  
Linearity [2]  
Transverse Sensitivity, Max.  
Signal Polarity

	ENGLISH	SI
Sensitivity	10 mV/g	1.02 mV/m/s <sup>2</sup>
Range F.S.	±500 g pk	±4905 m/s <sup>2</sup> pk
Frequency Response	2.43 to 4000 Hz	2.43 to 4000 Hz
	1.29 to 10000 Hz	1.29 to 10000 Hz
Element Natural Frequency	25 kHz	25 kHz
Equivalent Electrical Noise	0.01 g RMS	0.098 m/s <sup>2</sup> RMS
Spectral Noise	1.25Hz: 680 µg RMS/√(Hz)	6671 µm/s <sup>2</sup> RMS/√(Hz)
	10Hz: 680 µg RMS/√(Hz)	6671 µm/s <sup>2</sup> RMS/√(Hz)
	100Hz: 120 µg RMS/√(Hz)	1177 µm/s <sup>2</sup> RMS/√(Hz)
	1000Hz: 31.5 µg RMS/√(Hz)	309 µm/s <sup>2</sup> RMS/√(Hz)
	10000Hz: 22 µg RMS/√(Hz)	216 µm/s <sup>2</sup> RMS/√(Hz)
Linearity	±1 % F.S.	±1 % F.S.
Transverse Sensitivity	6 %	6 %
Signal Polarity	[4]	[4]

**ELECTRICAL**

Supply Current Range [3]  
Compliance Voltage Range  
Output Impedance, Typ.  
Output Bias Voltage  
Discharge Time Constant  
Magnetic Sens. at 100 Gauss  
Strain Sensitivity @ 250µε  
Ground Isolation

	ENGLISH	SI
Supply Current Range	2 to 20 mA	2 to 20 mA
Compliance Voltage Range	+18 to +30 VDC	+18 to +30 VDC
Output Impedance, Typ.	100 Ω	100 Ω
Output Bias Voltage	7 to 12 VDC	7 to 12 VDC
Discharge Time Constant	0.2 -2.0 sec	0.2 -2.0 sec
Magnetic Sens. at 100 Gauss	0.00005 g/Gauss	4.905 m/s <sup>2</sup> /T
Strain Sensitivity @ 250µε	0.008 g/µε	0.08 m/s <sup>2</sup> /µε
Ground Isolation	Case Ground	Case Ground

**ENVIRONMENTAL**

Maximum Shock  
Temperature Range  
TEDS Operating Temp.  
Environmental Seal  
TEDS

	ENGLISH	SI
Maximum Shock	±1000 g pk	±9810 m/s <sup>2</sup> pk
Temperature Range	-60 to +325 °F	-51 to +162 °C
TEDS Operating Temp.	-40 to +185 °F	-40 to +85 °C
Environmental Seal	Hermetic	Hermetic
TEDS	IEEE 1451.4	IEEE 1451.4

**This family also includes:**

Model	Sensitivity (mV/g)	Range (g pk)	Resolution (g RMS)	Oper. Temp (°F)	TC (Sec)
3023B4	1	5000	0.07	-60 to +325	0.2 to 2.0
3023B5	5	1000	0.014	-60 to +325	0.2 to 2.0
3023B6	10	500	0.007	-60 to +325	0.2 to 2.0
3023B4T	1	5000	0.07	-60 to +325	0.2 to 2.0
3023B5T	5	1000	0.014	-60 to +325	0.2 to 2.0

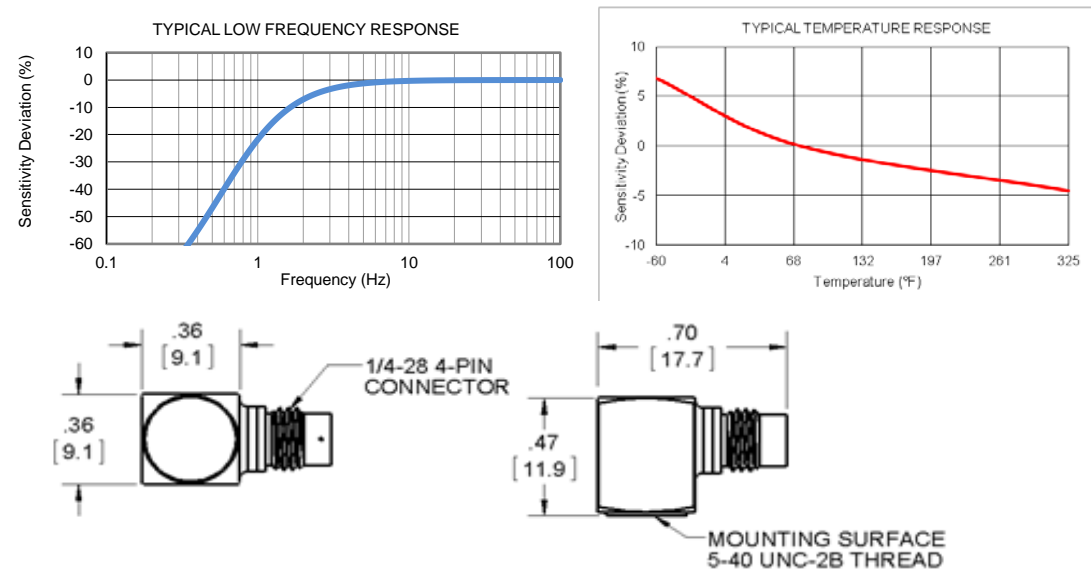
Please, refer to the performance specifications of the products in this family for detailed description

**Supplied Accessories:**

- 1) Accredited Calibration Certificate (ISO 17025)
- 2) Model 6580 Mounting Stud, Qty 1.

**Notes:**

- [1] Connector mates with Dytran's cable assy. model 6811AXX or 6824AXX. (xx = length in feet)
  - [2] Measured using zero-based best straight-line method, % of F.S. or any lesser range.
  - [3] Do not apply power to this system without current limiting, 20 mA MAX. To do so will destroy the IC charge amplifier.
  - [4] Positive for motion in direction of arrows on housing.
  - [5] All specifications are at room temperature unless otherwise specified.
  - [6] In the interest of constant product improvement, we reserve the right to change specifications without notice.
- It is the customer's responsibility to validate that a particular product with the properties described in the product specification is suitable for use in a particular application. Parameters provided in datasheets and / or specifications may vary in different applications and performance may vary over time. All operating parameters, including typical parameters, must be validated for each customer application by the customer's technical experts.



Units on the line drawing are in inches, units in brackets are in millimeters. Refer to 127-3023B4 for more information.



21592 Marilla Street, Chatsworth, California 91311 Phone: 818.700.7818 Fax: 818.698.0362 www.dytran.com  
 For permission to reprint this content, please contact info@dytran.com