

4

3

2

1

PROPRIETARY AND CONFIDENTIAL

THE INFORMATION CONTAINED IN THIS DRAWING IS THE SOLE PROPERTY OF DYTRAN INSTRUMENTS INC. ANY REPRODUCTION IN PART OR AS A WHOLE WITHOUT THE WRITTEN PERMISSION OF DYTRAN INSTRUMENTS INC. IS PROHIBITED

D

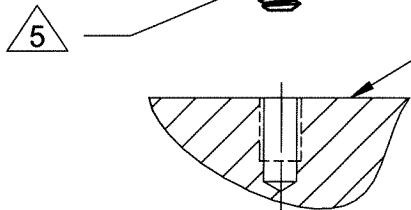
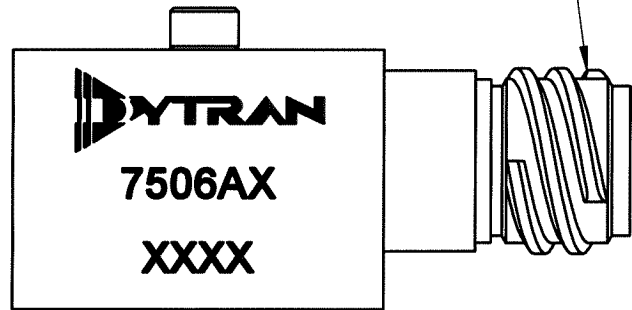
| MODEL | SENSITIVITY |
|--------|---------------|
| 7506A1 | 100 μ A/g |
| 7506A2 | 13 μ A/g |

2X ϕ .125^{+0.010}_{-.001} THRU

C

| | | | |
|---------------------------------|---|---|---|
| $3.18^{+0.25}$ _{-0.03} | A | B | C |
| ϕ .020 (M) | A | | |
| ϕ .006 (M) | A | | |

3 CONNECTOR, RECEPTACLE, 3-PIN, GLENAIR P/N: 805-006-13Z18-23PA



MOUNTING RECOMMENDATIONS: PREPARE MOUNTING SURFACE FLAT TO .001 TIR. TAP 4-40 UNC-2B ∇ .20 MIN. RECOMMENDED MOUNTING TORQUE 6-8LB-IN. FOR BEST FREQUENCY RESPONSE, MOUNTING SURFACE MUST CONTACT THE ENTIRE ACCELEROMETER MOUNTING SURFACE.

6. MINOR VOIDS, SCARS, SCRATCHES AND MOUNTING BLEMISH/WITNESS MARKS ON EXTERIOR SURFACES ARE ALLOWED DUE TO RESTRAINING AND HANDLING DURING TESTING, TRANSPORT OR PROCESSING. THESE APPEAR AS INDICATORS THAT DO NOT AFFECT FORM, FIT OR FUNCTION AS INTENDED BY DESIGN OR APPLICATION

5 SUGGESTED HARDWARE: 4-40 UNC-2A X .875, SHCS, 300 SERIES STAINLESS STEEL.

4 LOCATION OF SENSING ELEMENT

3 MATES WITH GLENAIR PLUG 805-001-16Z18-23SA AND 805-002-16Z18-23SA.

2 ARROW INDICATES ACCELERATION DIRECTION FOR POSITIVE OUTPUT

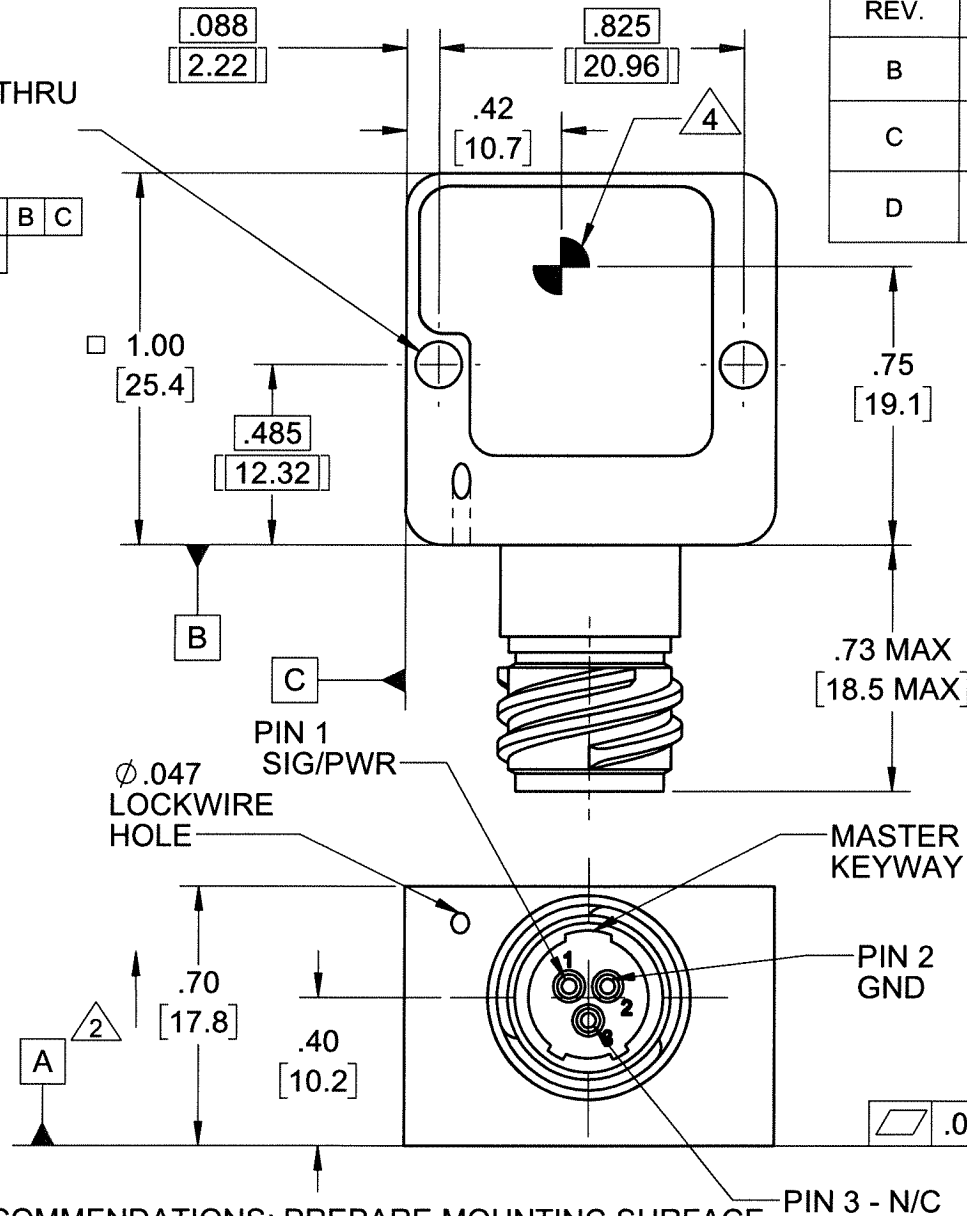
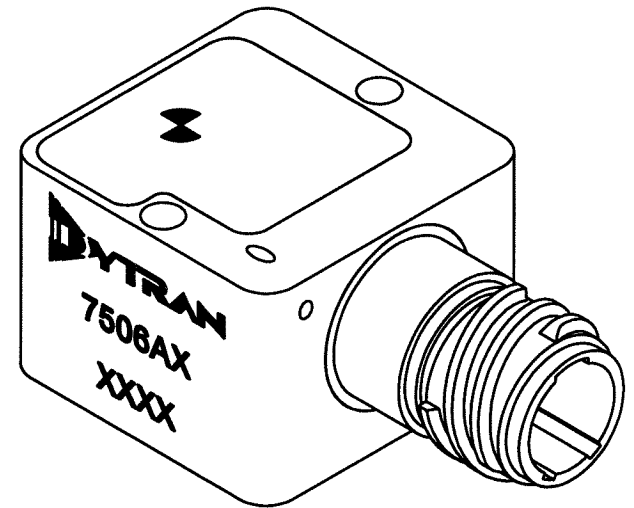
1. WEIGHT: 70 GRAMS MAX

NOTES: UNLESS OTHERWISE SPECIFIED

DWG NO 127-7506A1 SH 1 REV D

REVISIONS

| REV. | ECN | DESCRIPTION | BY/DATE | CHK | APPR |
|------|-------|--|-------------|-----|------|
| B | 11868 | ADDED SUGGESTED HARDWARE AND MOUNTING PROVISION. | LA 03/31/15 | DV | AS |
| C | 12594 | ADDED NOTE 6 | JS 03/30/16 | LA | AS |
| D | 15579 | ADVANCED REVISION FOR CONFIGURATION CONTROL | LN 02/03/20 | | |



UNLESS OTHERWISE SPECIFIED:
INTERPRET DIM & TOL PER
ASME Y14.5M - 1994.
REMOVE BURRS.
COUNTERSINK INTERNAL THDS
90° TO MAJOR DIA.
CHAM EXT THDS 45° TO MINOR DIA.
THD LENGTHS AND DEPTHS ARE FOR
MIN FULL THDS.
DIMENSIONS APPLY AFTER FINISHING.

ALL MACHINED SURFACES.
TOTAL RUNOUT WITHIN .005.
BREAK SHARP EDGES .005 TO .010.
MACHINED FILLET RADII .005 TO .015.
WELDING SYMBOLS PER AWS A2.4.
ABBREVIATIONS PER MIL-STD-12.


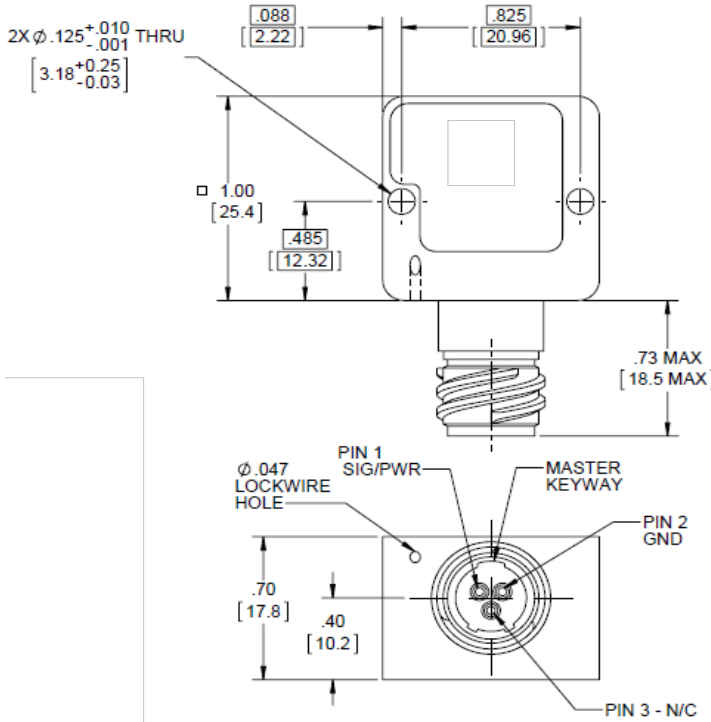
| UNLESS OTHERWISE SPECIFIED: DIMENSIONS ARE IN INCHES. DIMENSIONS IN BRACKETS [] ARE IN MILLIMETERS TOLERANCES ARE: | | |
|--|---------------|-------------------------------|
| DECIMALS | METRIC | ANGLES |
| .XX \pm .03 | X \pm 0.8 | \pm 1° |
| .XXX \pm .010 | XX \pm 0.25 | |
| APPROVALS | | DATE |
| ORIG | LN | 11/25/14 |
| CHK | DV | 02/02/15 |
| APP | RT | 02/02/15 |
| DO NOT SCALE DRAWING | | THIRD ANGLE PROJECTION USA |




MASTER
ONLY IF IN RED

TITLE: OUTLINE/INSTALLATION, CVLD
ACCEL, 7506A1 & 7506A2

| SIZE | CAGE CODE | DWG NO | REV |
|------------|-----------|--------------|-----|
| B | 2W033 | 127-7506A1 | D |
| SCALE: 2:1 | | SHEET 1 OF 1 | |

| Model Number 7506A2 | | PERFORMANCE SPECIFICATIONS | | | | DOC NO PS7506A2 | |
|---|-----------------|---|---------------------------------------|-------------------|---------------------------------|----------------------------|--|
| | | VARIABLE CAPACITANCE ACCELEROMETER | | | | REV D, ECN 15579, 01/31/20 | |
|  | | <ul style="list-style-type: none">• VARIABLE CAPACITANCE ACCELEROMETER• CURRENT OUTPUT• HERMETICALLY SEALED• DC RESPONSE• 4-20 mA LOOP COMPATIBLE | | | | | |
| | | ENGLISH | | SI | | | |
| PHYSICAL | | | | | | | |
| Weight, Max | | 2.5 | oz | 70 | grams | | |
| Connector [2] | Type | Receptacle, 3-pin | | Receptacle, 3-pin | | | |
| Mounting | Thru Holes | 2 X Ø.125 | | 2 X Ø.125 | | | |
| Material | | 300 Series S.S. | | 300 Series S.S. | | | |
| PERFORMANCE | | | | | | | |
| Input Range | | ±400 | g | ±3924 | m/s ² | | |
| Frequency Response (-3dB), ± 50Hz [1][5] | | 0-300 | Hz | 0-300 | Hz | | |
| Sensitivity Differential, ±10% | | 13 | µA/g | 1.3 | µA/m/s ² | | |
| Output Noise, Differential ,Typ | | 400 | µ g rms/√ Hz | 3924 | µ m/s ² /√ Hz | | |
| Non-Linearity, Max [4] | | 0.5 | % F.S | 0.5 | % F.S | | |
| Transverse Sensitivity, Max | | 4 | % | 4 | % | | |
| Scale Factor Calibration Error, Max | | 2 | % | 2 | % | | |
| Zero Measured Output | | ±50 | mV | ±50 | mV | | |
| ENVIRONMENTAL | | | | | | | |
| Maximum Mechanical Shock | | 5000 | gpk | 49050 | m/s ² peak | | |
| Bias Temperature Shift ,Max [3] | | 56 | (ppm of span)/°F | 100 | (ppm of span)/°C | | |
| Bias Calibration Error, Max | | 0.5 | % of span | 0.5 | % of span | | |
| Operating Temperature Range | | -55 to +257 | °F | -48 to +125 | °C | | |
| Scale Factor Temperature Shift [3] | | -111 to 111 | ppm/°F | -200 to 200 | ppm/°C | | |
| Seal | | Hermetic | | Hermetic | | | |
| ELECTRICAL | | | | | | | |
| Bias Current | | 14-15 | mA | 14-15 | mA | | |
| Output Impedence,Nom | | 400 | Ω | 400 | Ω | | |
| Operating Voltage | | 10-36 | VDC | 10-36 | VDC | | |
| Operating Voltage Rise Time | | <2 | ms | <2 | ms | | |
| Full Scale Output | | ±5 | mA | ±5 | mA | | |
| Power Supply Rejection Ratio | | >65 | dB | >65 | dB | | |
| | | This family also includes: | | | | | |
| Model | Input Range (g) | Frequency response (Hz) | Sensitivity Differential, ±10% (µA/g) | Max.Shock (gpk) | Noise Differential (µg rms/√Hz) | | |
| 7506A1 | ± 50 | 0-300 | 100 | 5000 | 50 | | |
| | | | | | | | |
| | | | | | | | |
| | | | | | | | |
| Refer to the performance specifications of the products in this family for detailed description. | | | | | | | |
| Supplied Accessories: | | | | | | | |
| 1) Accredited calibration certificate (ISO 17025) | | | | | | | |
| Notes: | | | | | | | |
| [1] Low pass first order filter, corner frequency at 300Hz. | | | | | | | |
| [2] Glenair P/N 805-006-13Z18-23PA. Mates with 805-001-16Z18-23SA and 805-002-16Z18-23SA | | | | | | | |
| [3] Over the rated temperature range. | | | | | | | |
| [4] -90% to +90% of Full Scale. | | | | | | | |
| [5] When measured with 50 Ohm sense resistor. | | | | | | | |
| | |  | | | | | |
| Units on the line drawing are in inches, dimensions in brackets [] are in millimeters. Refer to 127-7506A1 for more information. | | | | | | | |



21592 Marilla Street, Chatsworth, California 91311 Phone: 818.700.7818 Fax:818.700.7880 www.dytran.com
For permission to reprint this content, please contact info@dytran.com

